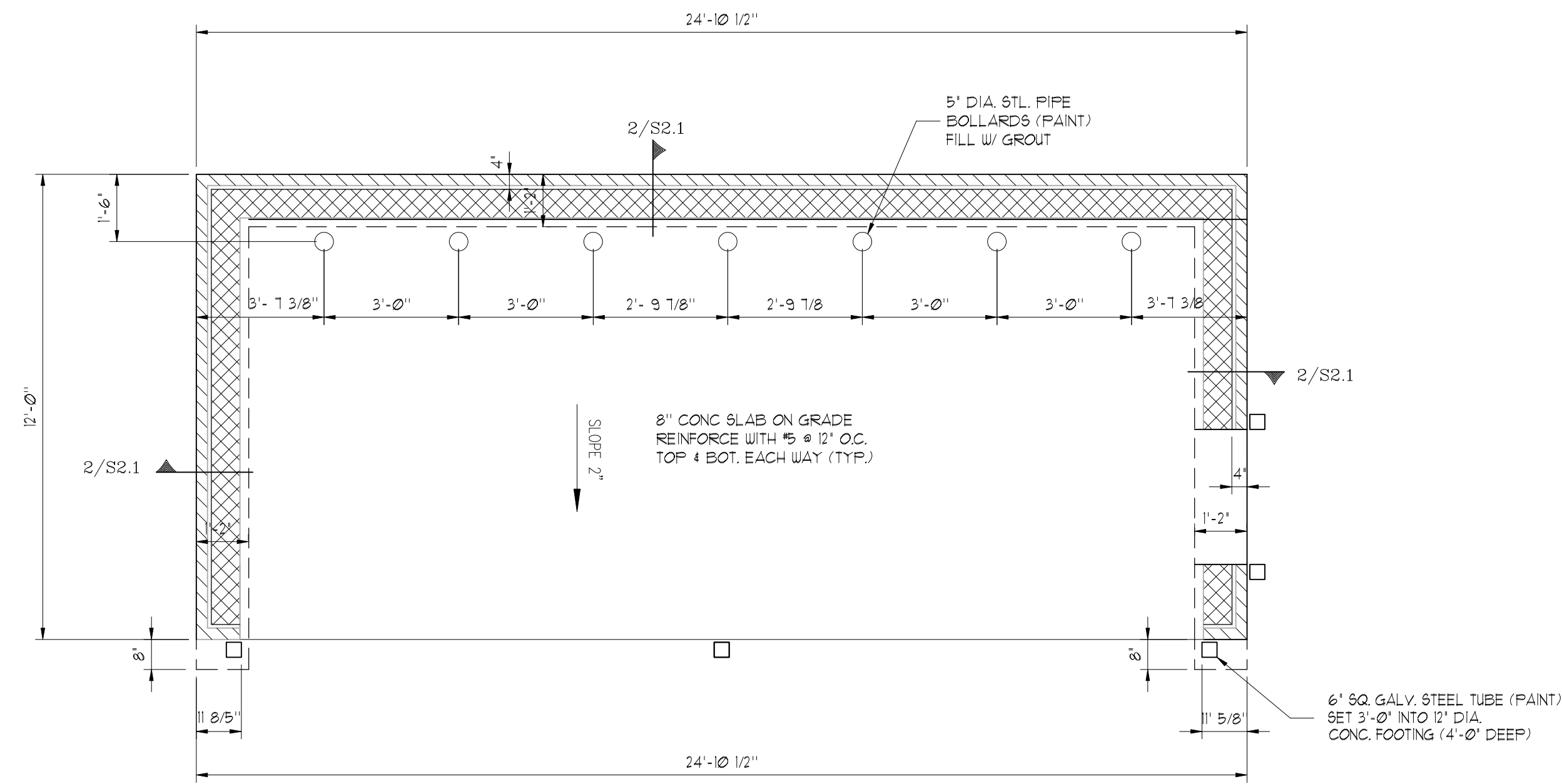
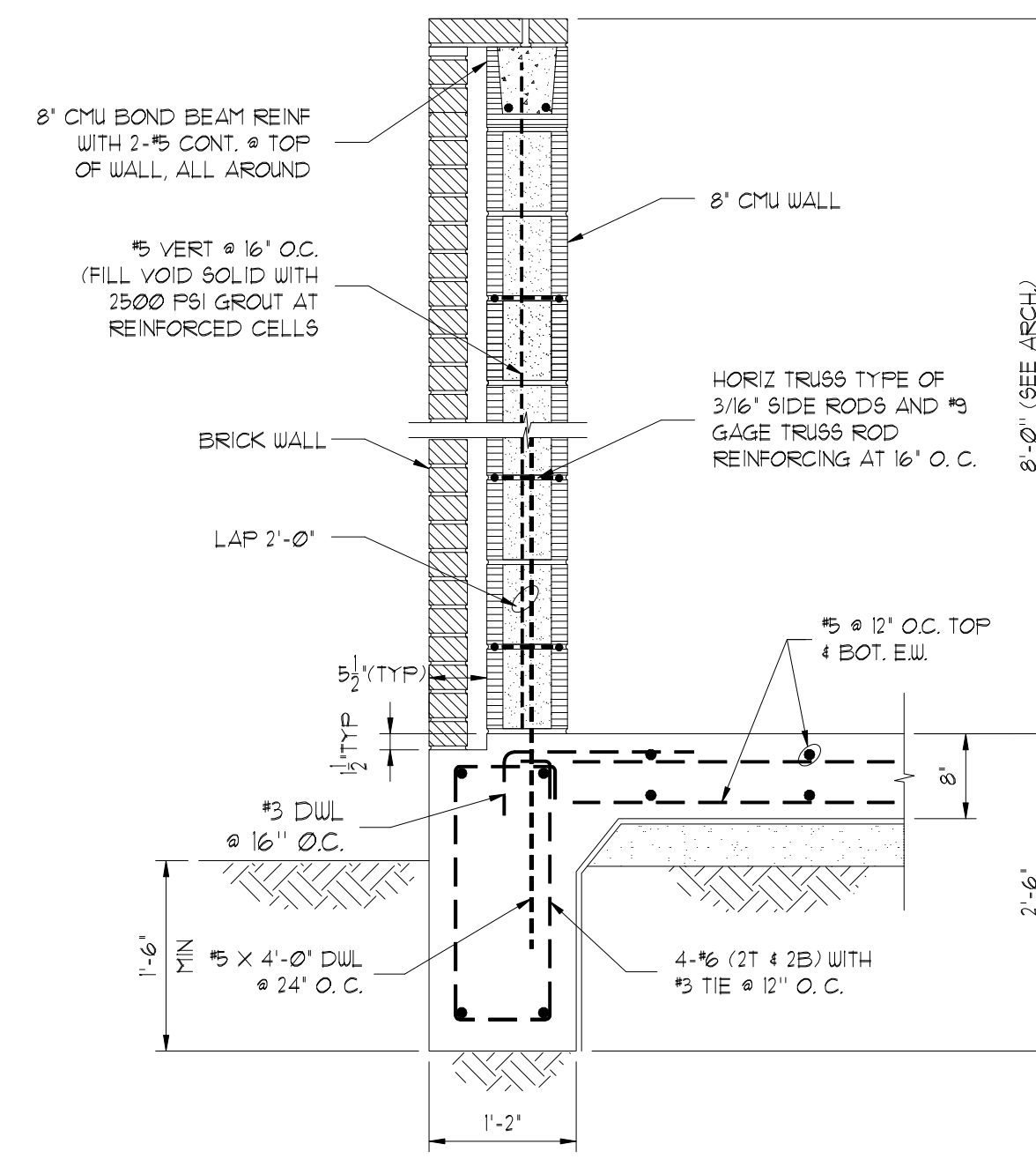


I:\2019\1467 - NewQuest Properties\0001 - The Shops At Sedona Lakes - CR 101 & CR 94\Structural Dwg\REV 2 - 08-26-19\19-1467-0001 - The Shops Sedona - Struc - Rev 2 - 08-26-19

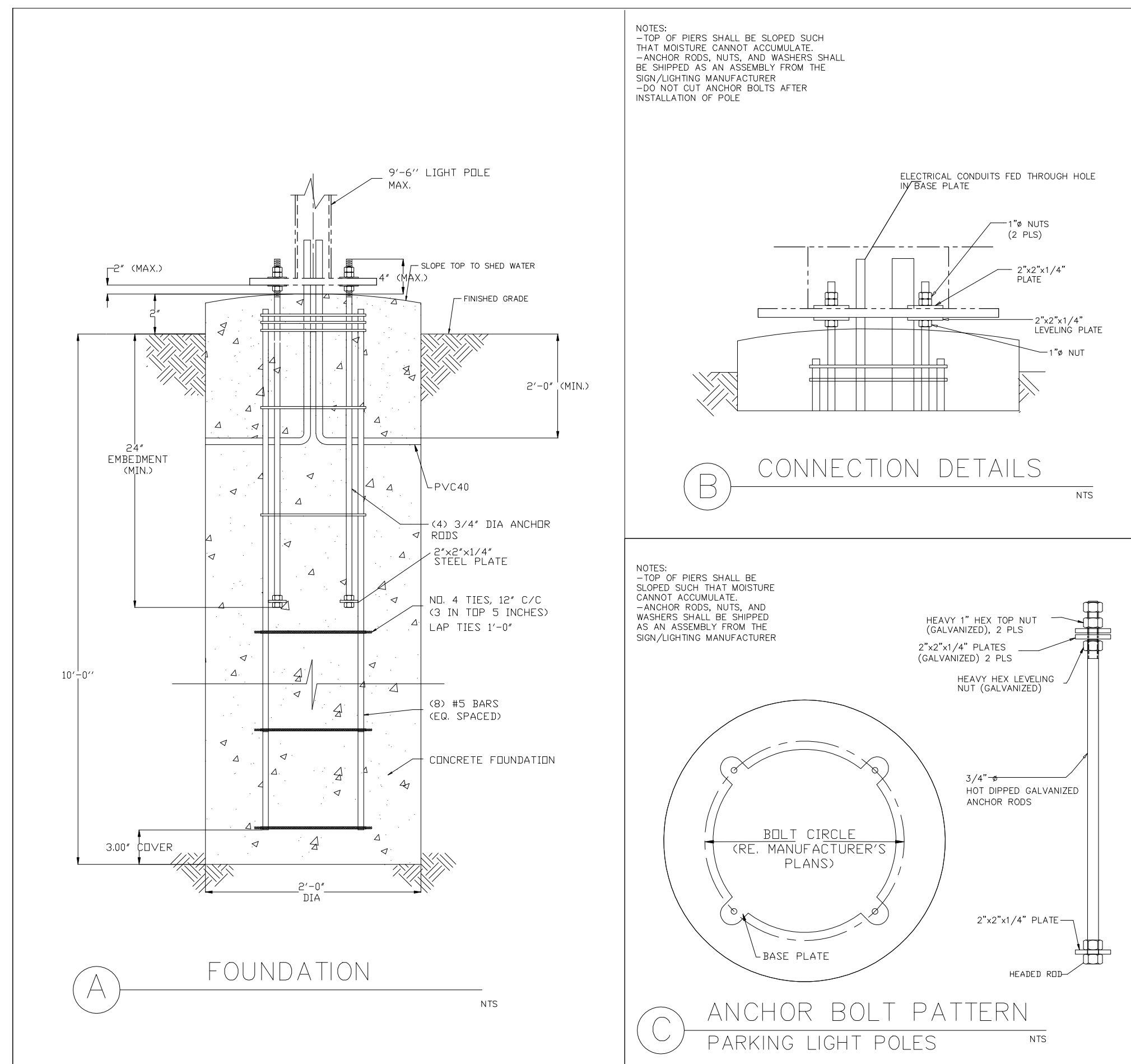


1 DUMPSTER FOUNDATION PLAN
S2.1 NOT TO SCALE

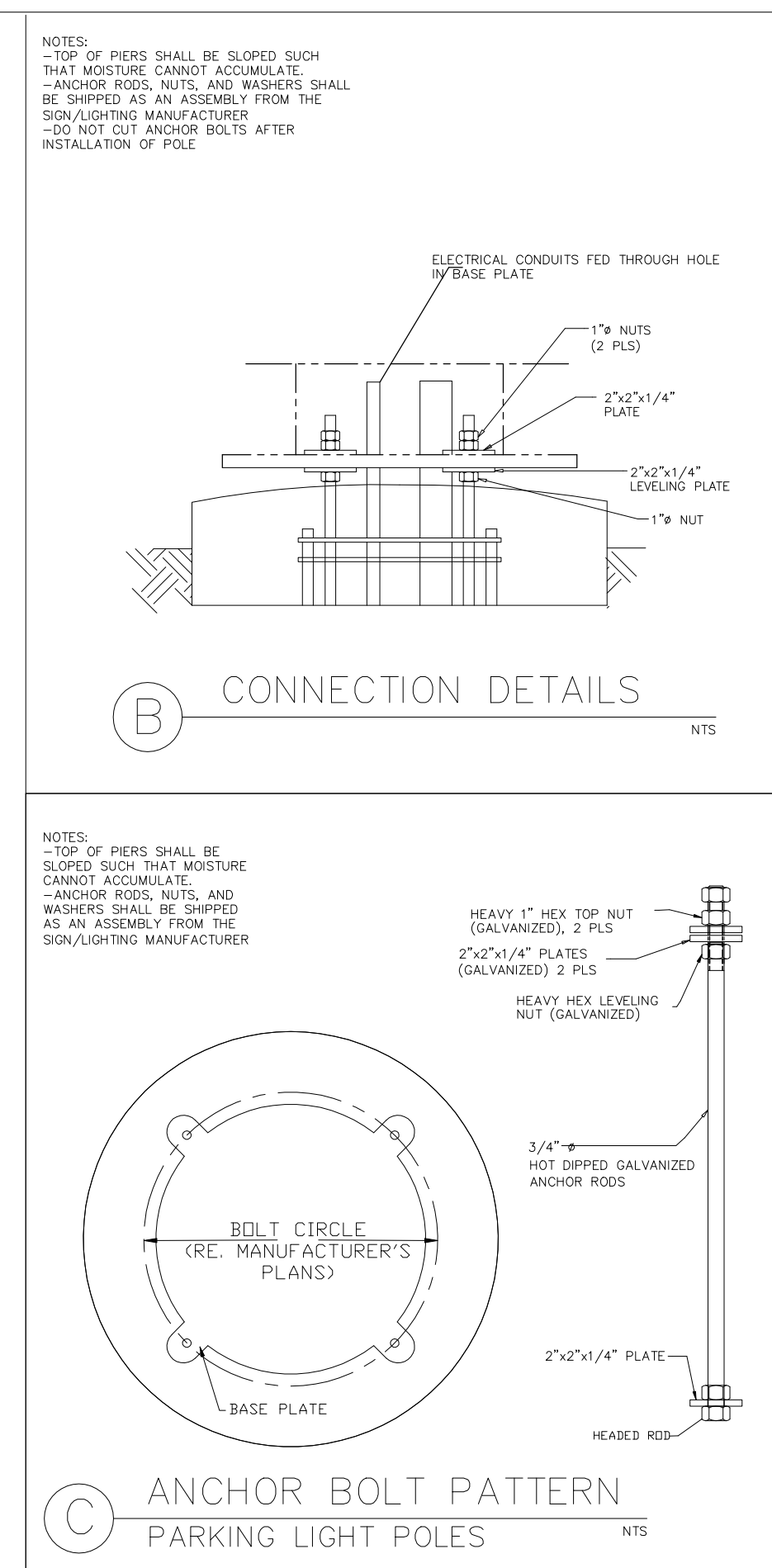


NOTE: REFER TO SITE 4 ARCH DRAWINGS FOR LOCATIONS

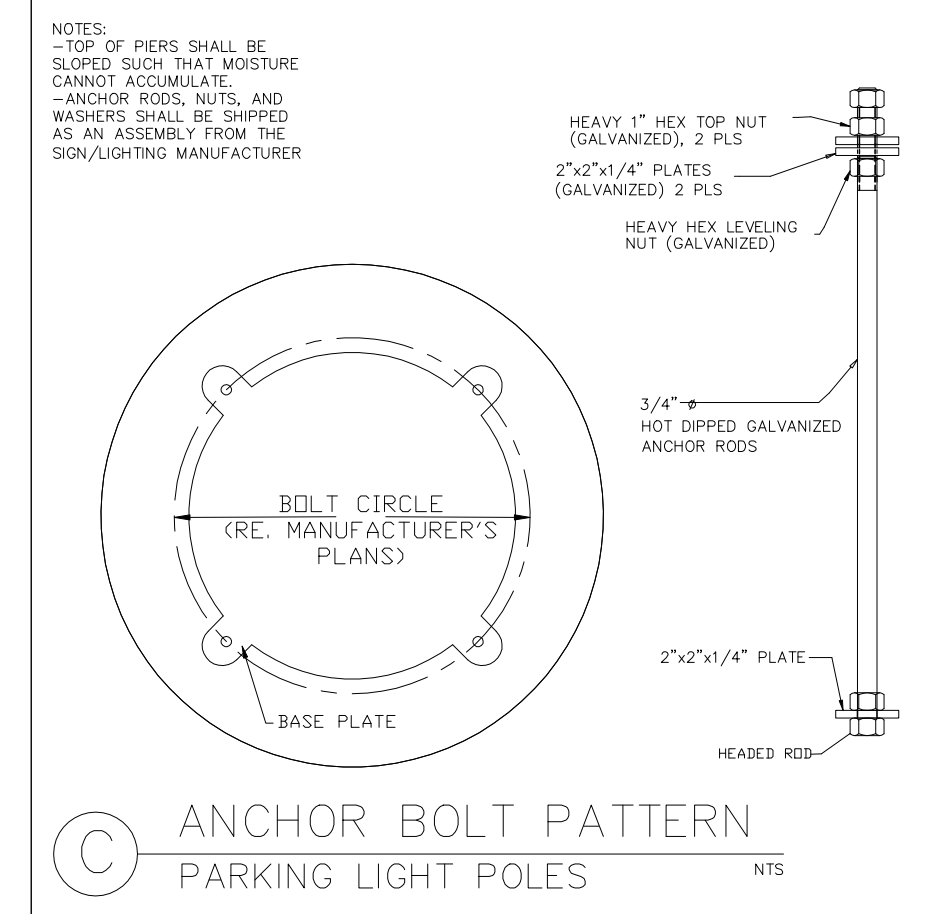
2 DUMPSTER DETAIL
S2.1 NOT TO SCALE



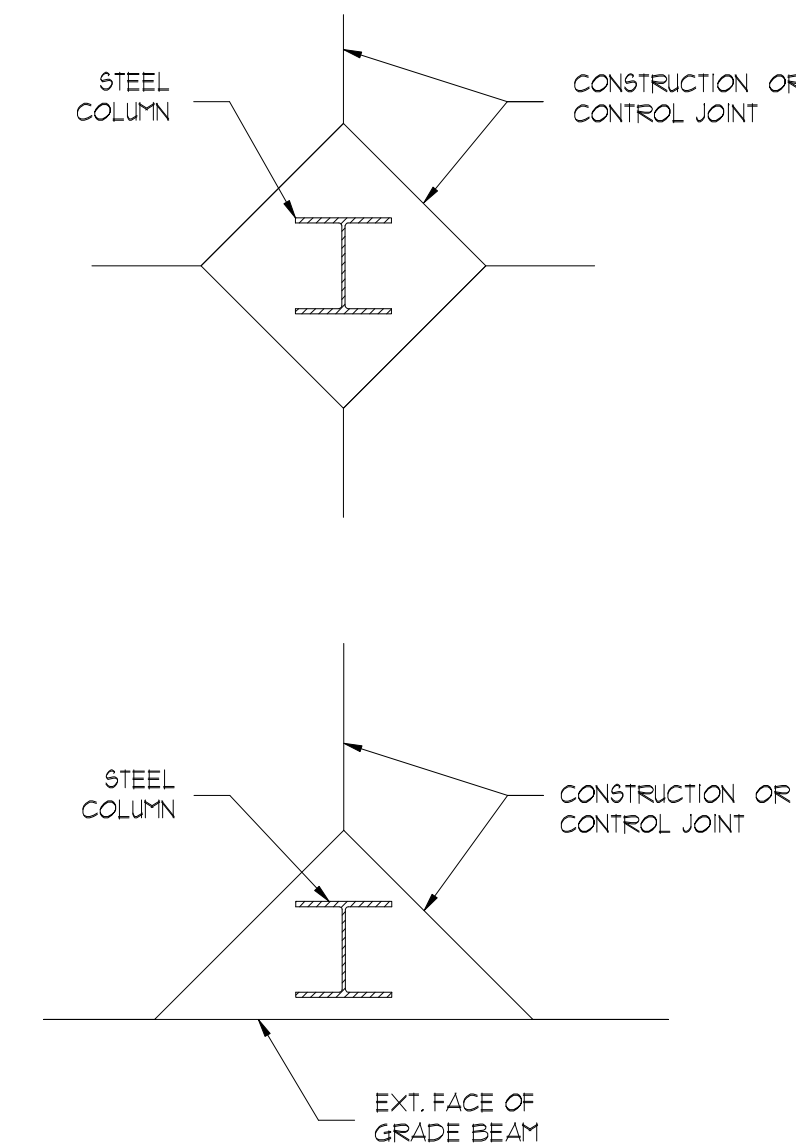
3 25' LIGHT POLE DETAIL
S2.1 NOT TO SCALE



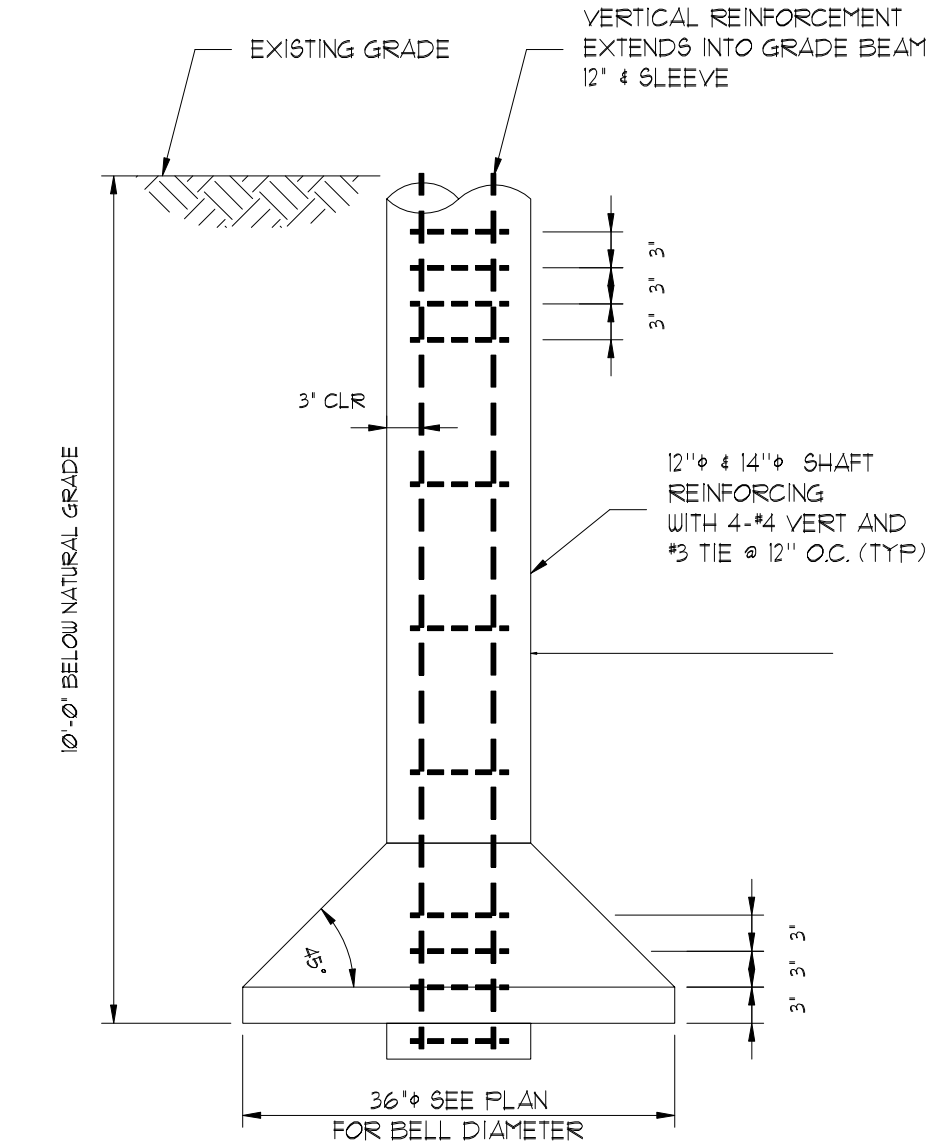
B CONNECTION DETAILS
NTS



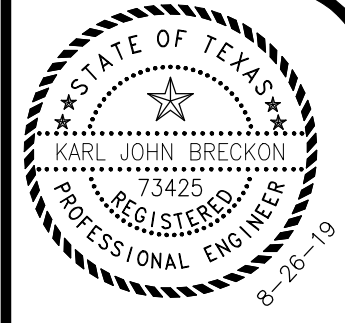
C ANCHOR BOLT PATTERN
PARKING LIGHT POLES
NTS



4 SLAB BLOCK-OUT AT COLUMN
S2.1 NOT TO SCALE



5 TYP. PIERS DETAIL
S2.1 NOT TO SCALE



Signature of Joseph M. Foster

NO	DATE	ISSUES/REVISIONS
0	06-07-2019	ISSUED FOR PERMIT
1	08-07-2019	REVISED PER CITY COMMENTS
2	08-28-2019	REVISED PER CLIENT COMMENTS
3		
4		
5		
6		
7		
8		
9		

BEC ENGINEERS AND CONSULTANTS, LLC
3200 Wilcrest Dr., Suite 440 J, Houston, Texas 77042
 Ph: 832-788-8888 | Fax: 832-788-8889

NEWQUEST PROPERTIES
JOSEPH M. FOSTER & ASSOCIATES
THE SHOPS AT SEDONA LAKES
MANVEL, TEXAS

REF#: 19-1467-0001
 DRN: YAN | CHK: K.B. | DES: K.B.
FOUNDATION DETAILS
 SHEET NO. **S2.1**

THIS DRAWING IS THE PROPERTY OF BEC ENGINEERS AND CONSULTANTS, LLC. REG. # F-18699 AND MAY NOT BE REPRODUCED OR USED WITHOUT WRITTEN PERMISSION. ANY UNAUTHORIZED ALTERATION WILL VOID ANY AND ALL RESPONSIBILITY BY BEC, ITS EMPLOYEES AND REPRESENTATIVES.