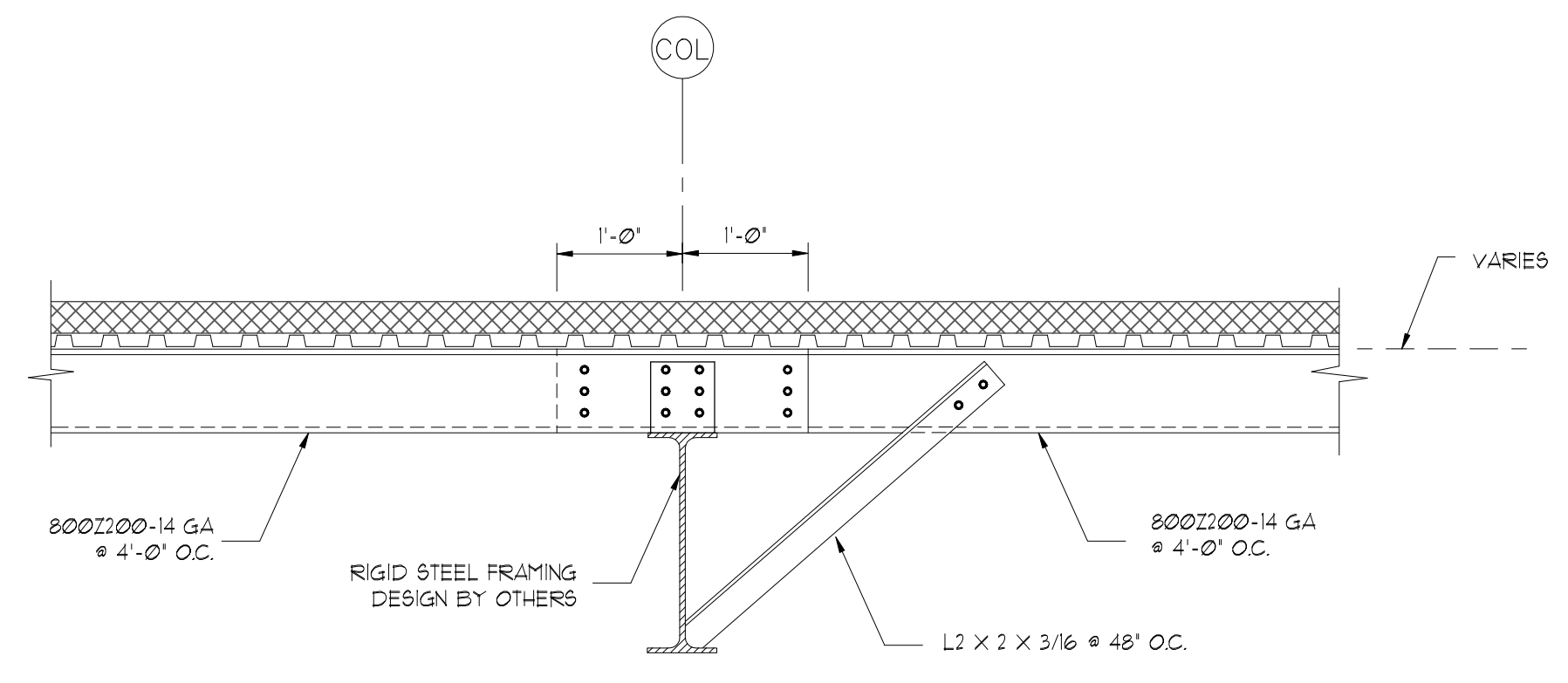
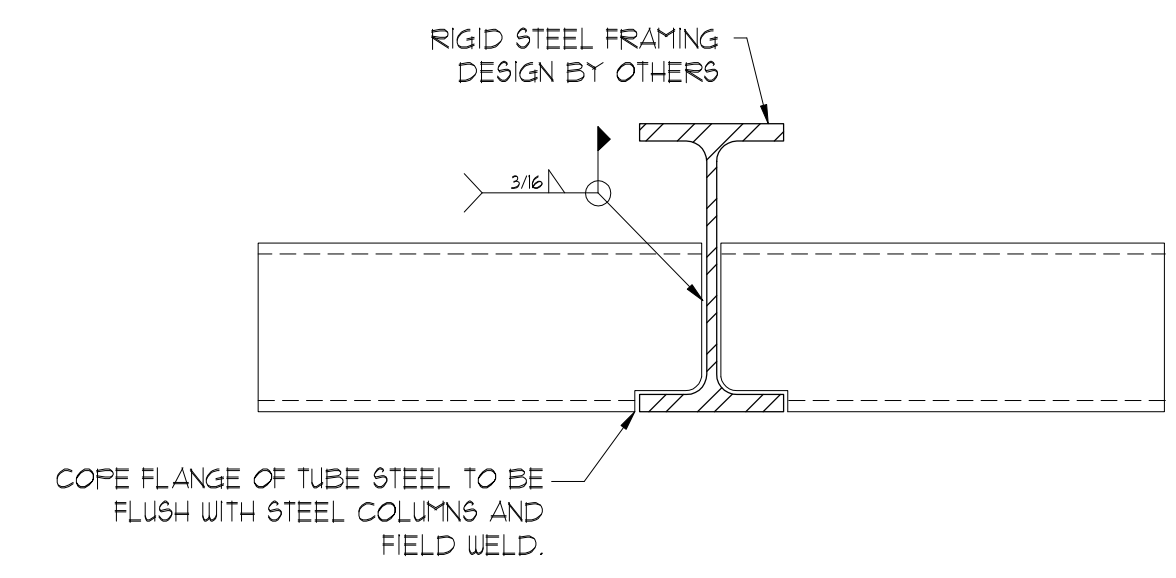


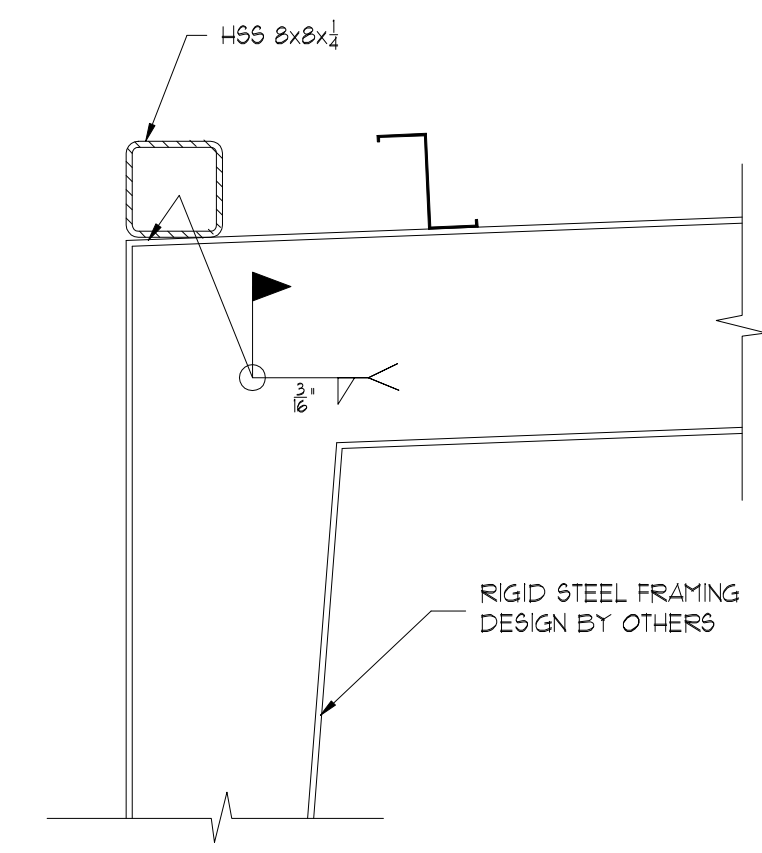
1/2019/1/1467 - NewQuest Properties/0001 - The Shops At Sedona Lakes - CR 101 & CR 9A/Structural/Drawings/REV 2 - 08-26-19/19-1467-0001 - The Shops Sedona - Struct - Rev 2 - 08-26-19



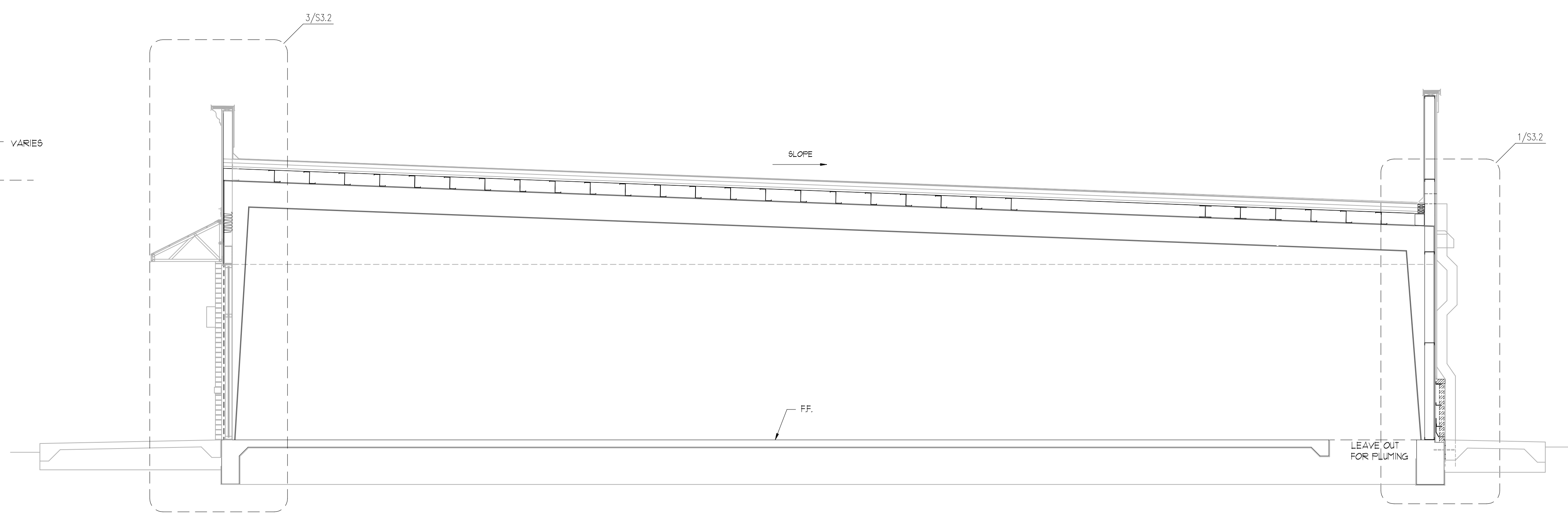
1 SECTION  
S3.1 NOT TO SCALE



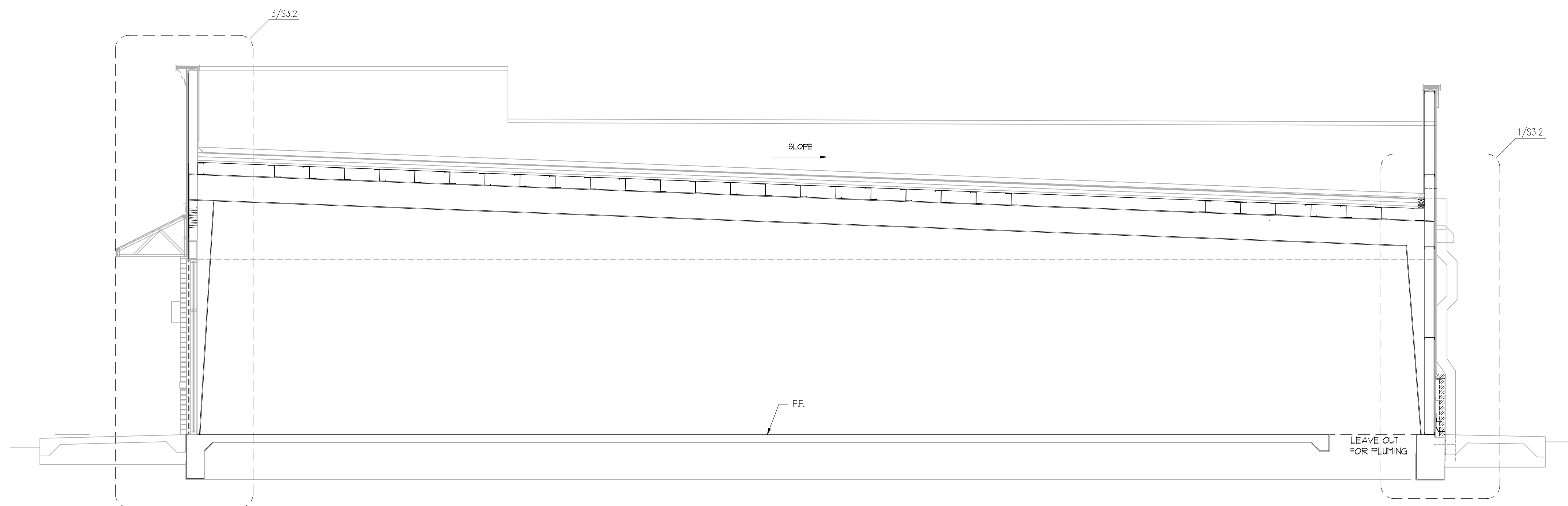
2 SECTION  
S3.1 NOT TO SCALE



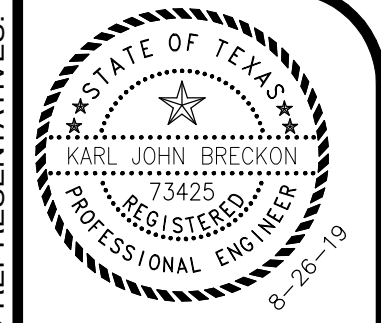
3 SECTION  
S3.1 NOT TO SCALE



3 SECTION  
S3.1 NOT TO SCALE



4 SECTION  
S3.1 NOT TO SCALE



*Karl John Breckon*

NO	DATE	ISSUES/REVISIONS
0	06-07-2019	ISSUED FOR PERMIT
1	08-07-2019	REVISED PER CITY COMMENTS
2	08-26-2019	REVISED PER CLIENT COMMENTS

**BEC** ENGINEERS AND CONSULTANTS, LLC  
 3200 WILCREST DRIVE, SUITE 440, HOUSTON, TEXAS 77042  
 PH: 832-240-3771 | FAX: 832-240-2724  
 TBP# REGIS. # F-18690

**NEWQUEST PROPERTIES**  
**JOSEPH M. FOSTER & ASSOCIATES**  
**THE SHOPS AT SEDONA LAKES**  
**MANVEL, TEXAS**

REF#:	19-1467-0001
DRN:	YAN
CHK:	K.B.
DES:	K.B.

**FRAMING DETAILS**

SHEET NO. **S3.1**

THIS DRAWING IS THE PROPERTY OF BEC ENGINEERS AND CONSULTANTS, LLC. REG # F-18690 AND MAY NOT BE REPRODUCED OR USED WITHOUT WRITTEN PERMISSION. ANY UNAUTHORIZED ALTERATION WILL VOID ANY AND ALL RESPONSIBILITY BY BEC, ITS EMPLOYEES AND REPRESENTATIVES.