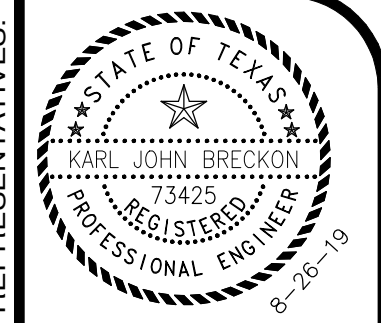


I:\2019\1467-NewQuest Properties\0001 - The Shops At Sedona Lakes - CR 101 & CR 9A Structural Dwg\REV2 - 08-24-19\19-1467-0001 - The Shops Sedona - Struc - Rev 2 - 08-26-19



Karl Brockton

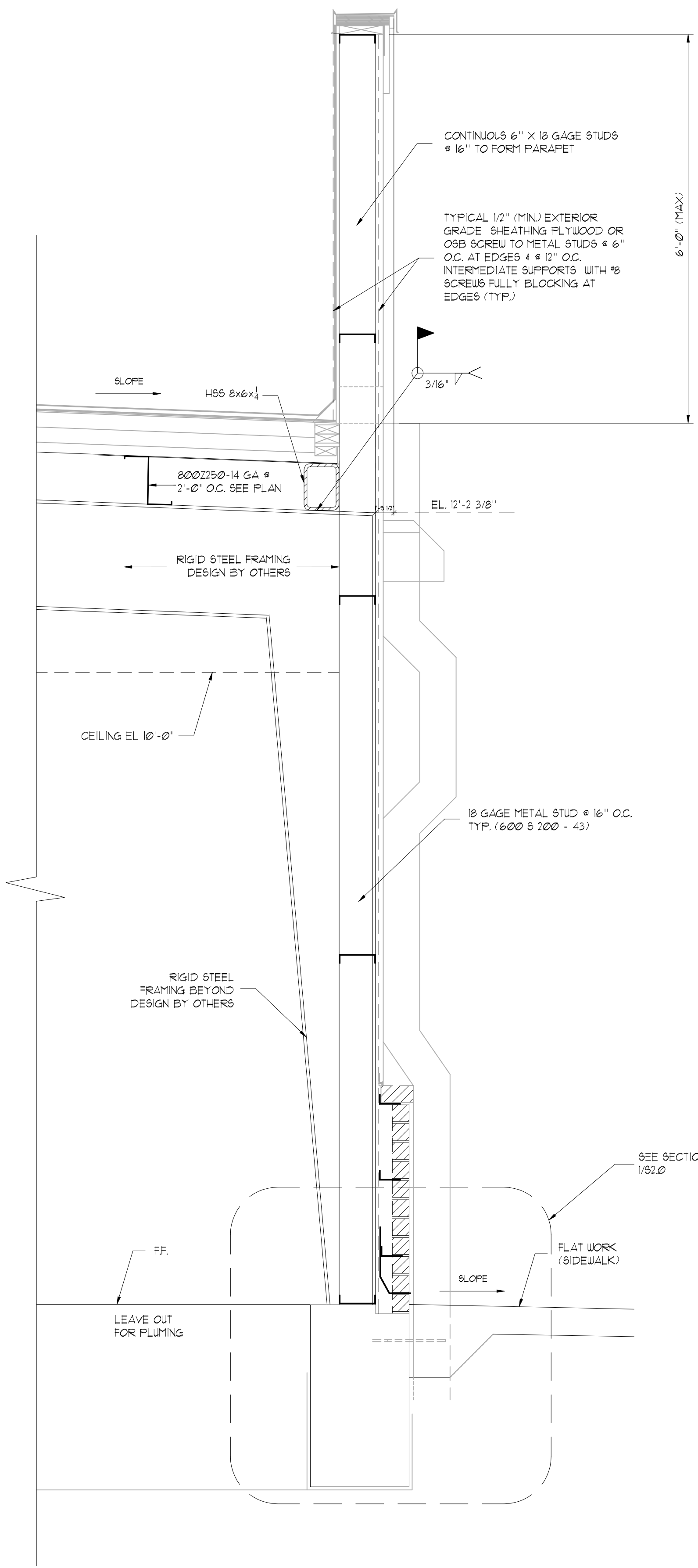
NO	DATE	ISSUES/REVISIONS
0	08-07-2019	ISSUED FOR PERMIT
1	08-07-2019	REVISED PER CITY COMMENTS
2	08-26-2019	REVISED PER CLIENT COMMENTS

BEC ENGINEERS AND CONSULTANTS, LLC
 BEC ENGINEERS AND CONSULTANTS, LLC
 3200 WILLOW CREEK AVENUE HOUSTON, TEXAS 77042
 Ph: 832-240-5771 | Fax: 832-240-2724
 TBP# REGIS. #: F-186590

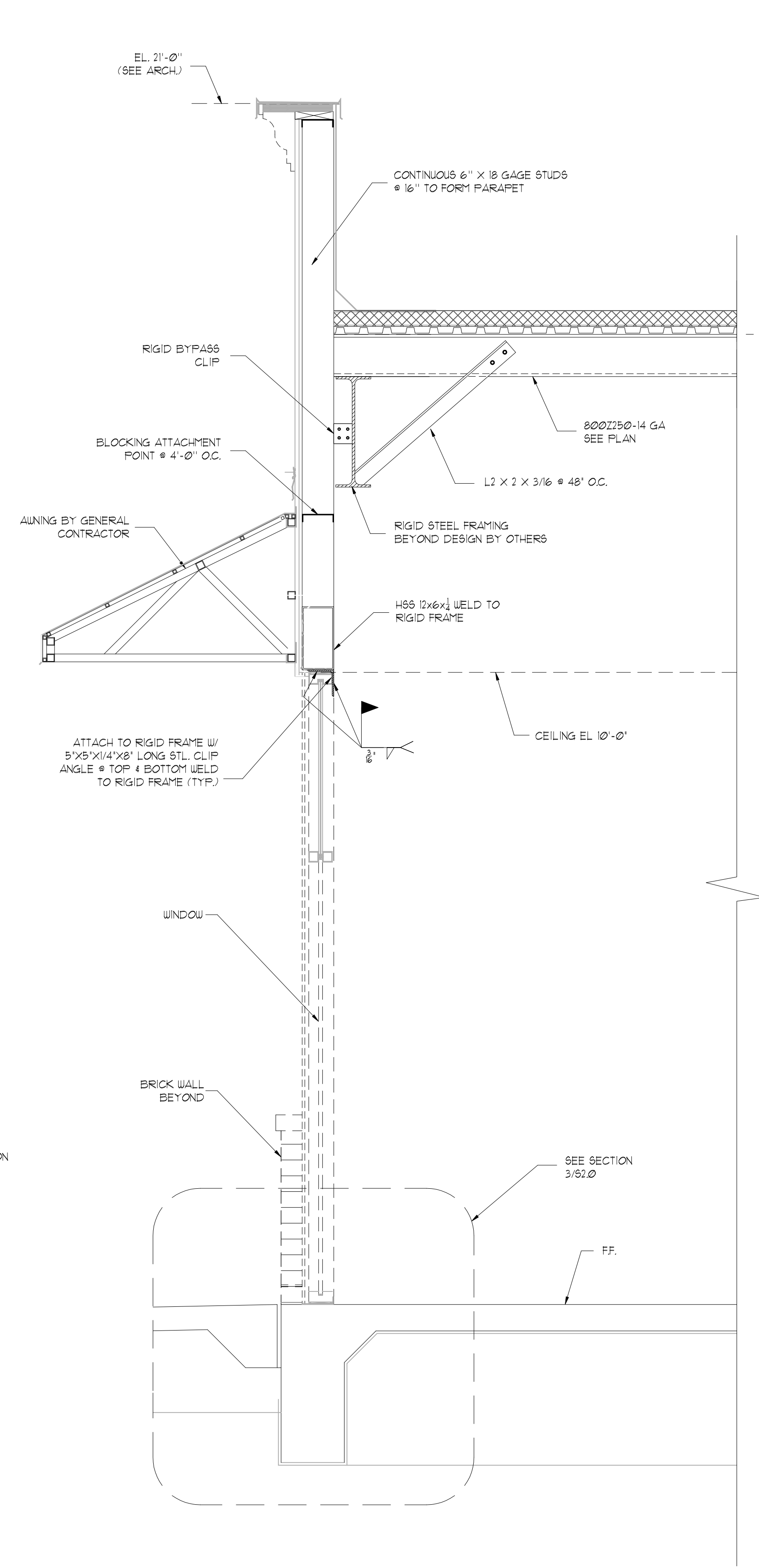
NEWQUEST PROPERTIES
JOSEPH M.FOSTER & ASSOCIATES
THE SHOPS AT SEDONA LAKES
MANVEL, TEXAS

REF#: 19-1467-0001
 DRN: YAN CHK: K.B. DES: K.B.
FRAMING DETAILS
 SHEET NO. **S3.2**

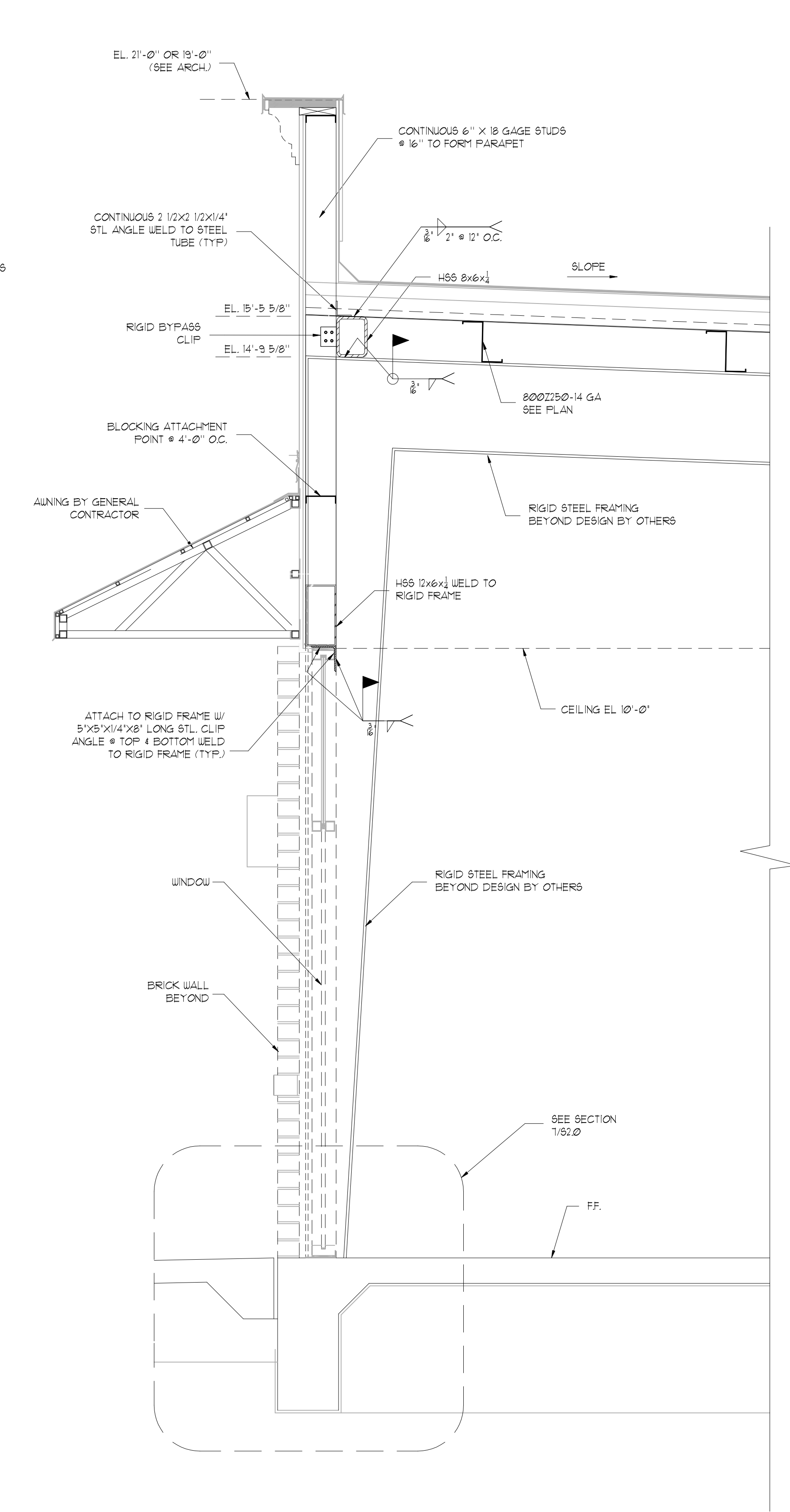
THIS DRAWING IS THE PROPERTY OF BEC ENGINEERS AND CONSULTANTS, LLC. REG # F-186590 AND MAY NOT BE REPRODUCED OR USED WITHOUT WRITTEN PERMISSION. ANY UNAUTHORIZED ALTERATION WILL VOID ANY AND ALL RESPONSIBILITY BY BEC, ITS EMPLOYEES AND REPRESENTATIVES.



1 SECTION
 S3.2 NOT TO SCALE



2 SECTION
 S3.2 NOT TO SCALE



3 SECTION
 S3.2 NOT TO SCALE