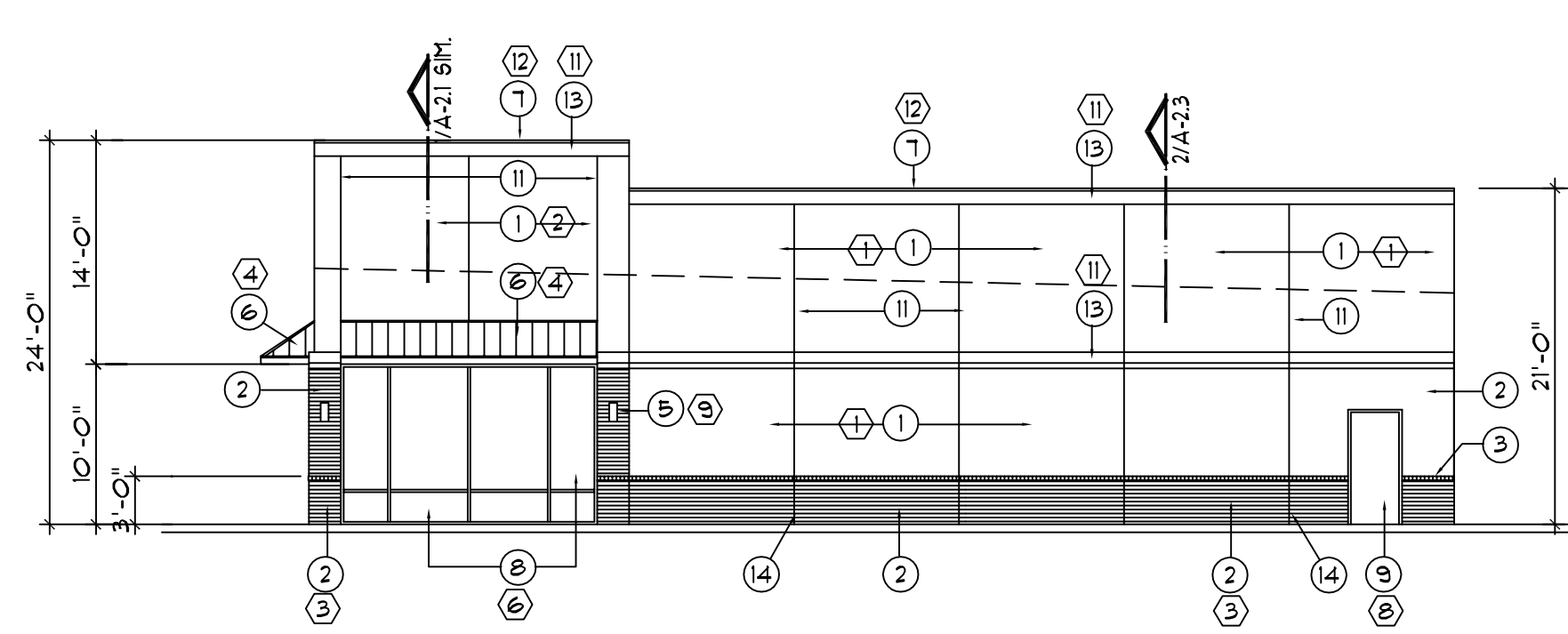
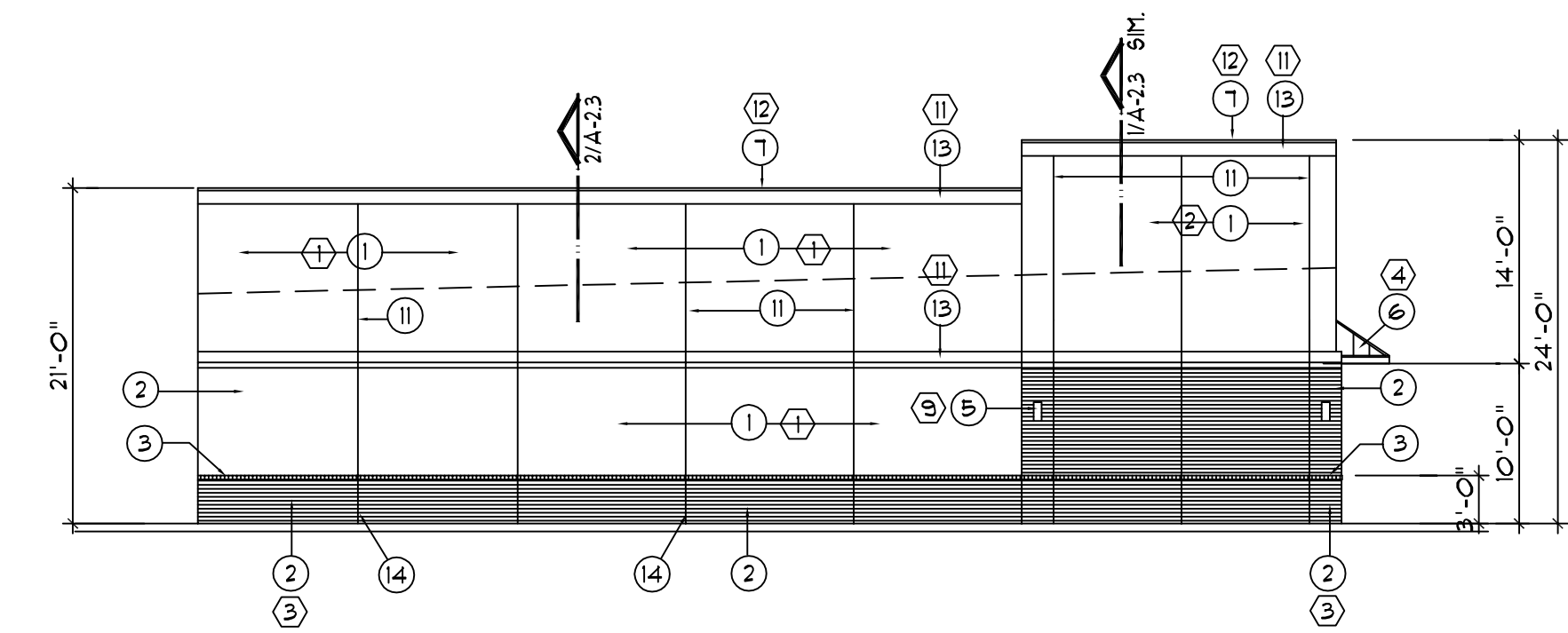




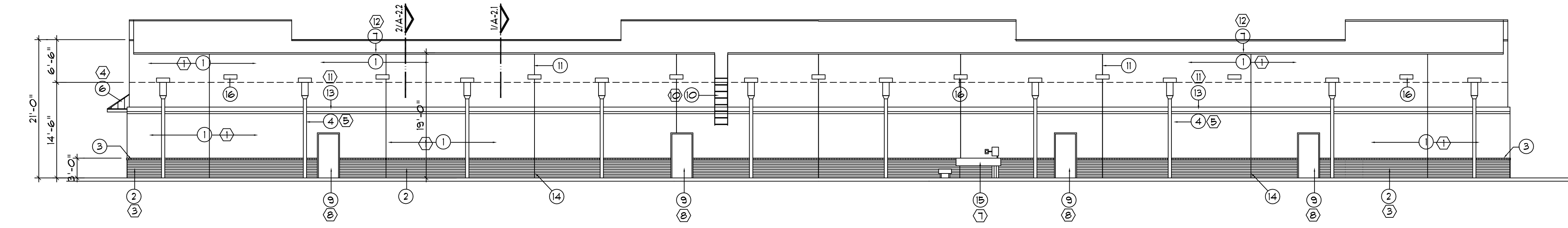
DATE OF SIGNATURE 04.09.19



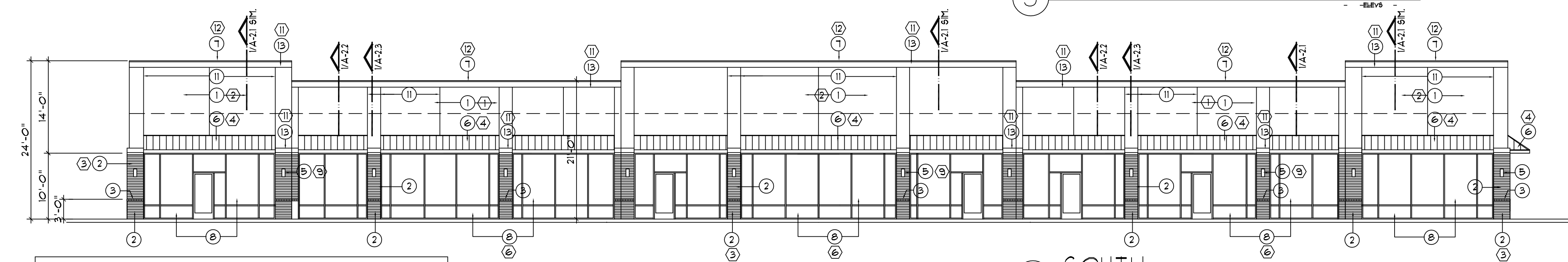
1 EAST ELEV. SCALE: 3/32"=1'-0"
 -ELEV-



2 WEST ELEV. SCALE: 3/32"=1'-0"
 -ELEV-



3 NORTH ELEV. SCALE: 3/32"=1'-0"
 -ELEV-



4 SOUTH ELEVATION SCALE: 3/32"=1'-0"
 -ELEV-

MATERIAL & COLOR LIST	
1	FIELD COLOR PFG, MACAROON CREAM PFG 15-05
2	ACCENT COLOR (TOWERS) PFG, STONINGTON PFG 15-25
3	BRICK ACME, CIBOLO TRAIL
4	CANOPIES BERRIDGE, MEDIUM BRONZE
5	DOWNSPOUTS & GUTTERS BERRIDGE, ALMOND
6	ALUM. STOREFRONT DARK ANODIZED BRONZE
	GLAZING CLEAR INSULATED
7	ELEC. EQUIP. PFG, MACAROON CREAM PFG 15-05
8	H.M. DOORS & FRAMES MACAROON CREAM PFG 15-05
9	LIGHT FIXTURES BRONZE ANODIZED
10	ROOF LADDER PFG, MACAROON CREAM, PFG 15-05
11	EIFS PFG, GRANITE 10226
	H.C. POLE & BOLLARD DARK BRONZE
	LGT. STDS. DARK BRONZE
	METAL ROOFING DARK BRONZE
12	FLASHING PFG, GRANITE 10226
	12 INDICATES COLOR OR FINISH (TYP.)

- A. "ANY SUBSTITUTION OF EXTERIOR MATERIALS MUST BE APPROVED BY THE CITY PRIOR TO INSTALLATION. SAMPLES OF SUBSTITUTE MATERIALS SHOULD BE SUBMITTED DIRECTLY TO THE ASSISTANT DIRECTOR OF PLANNING TO EXPEDITE THE REVIEW"
- B. "SOLID DOORS, INCLUDING ANY OVERHEAD DOORS, SERVICE AND UTILITY BOXES, GUTTERS AND DOWNSPOUTS WILL BE PAINTED EITHER A COMPLEMENTARY TRIM OR ACCENT COLOR, OR THE SURROUNDING PREDOMINATE COLOR TO BLEND"
- C. "ANY BOLLARDS WITHIN PUBLIC VIEW WILL BE PAINTED A COMPLEMENTARY TRIM OR ACCENT COLOR, NOT A PRIMARY OR BRIGHT COLOR SUCH AS YELLOW OR RED"
- D. "ANY COPING WILL EITHER MATCH A COMPLEMENTARY TRIM OR ACCENT COLOR, OR MATCH THE SURROUNDING PREDOMINATE COLOR TO BLEND"
- E. "ANY VENTILATION LOUVERS WILL BE UNIFORMLY PAINTED EITHER A COMPLEMENTARY TRIM OR ACCENT COLOR, OR MATCH THE SURROUNDING PREDOMINATE COLOR TO BLEND"
- F. "ALL ROOF-TOP EQUIPMENT WILL BE SCREENED BY PARAPET WALLS, GROUND-MOUNTED EQUIPMENT WILL BE SCREENED BY MASONRY WALLS OR LANDSCAPING. ALL TRANSFORMERS WILL BE SCREENED BY MASONRY WALLS, AND ALL WALL-MOUNTED EQUIPMENT WILL BE PAINTED TO MATCH THE BUILDING"
- G. "THE ZONING INSPECTOR WILL MAKE THE FINAL DETERMINATION DURING CONSTRUCTION AND PRIOR TO THE ISSUANCE OF A CERTIFICATE OF OCCUPANCY REGARDING COMPLIANCE WITH MECHANICAL EQUIPMENT SCREENING STANDARDS."

- 1 PLASTER WALL
- 2 QUEEN SIZE FACE BRICK
- 3 BRICK ROULOCK
- 4 PRE-FIN. 6X6 DOWNSPOUT W/ CONDUCTOR 4" HIGH X 2" WIDE SCUPPER (TYP. OF 10)
- 5 LIGHT FIXTURE (TYP.) RE: ELEC. DWGS.
- 6 PRE-FIN. GALV. METAL AWNING (TYP.)
- 7 PRE-FIN. GALV. METAL CAP FLASHING (TYP.)
- 8 DARK ANOD. BRONZE ALUM STOREFRONT
- 9 HOLLOW METAL DOOR & FRAME (TYP.) RE: 4/A13
- 10 ROOF ACCESS LADDER (TYP.) RE: 5/A13
- 11 EXPANSION JOINT (TYP.) COLOR TO MATCH WALL
- 12 BUILDING ADDRESS TO MEET CITY OF MANVEL STANDARDS
- 13 EIFS TRIM TO BE PFG GRANITE 1022-6
- 14 BRICK EXPAN. JT. (TYP.) COLOR TO MATCH WALL
- 15 PAINT ELEC. EQUIPMENT TO MATCH WALL (TYP.)
- 16 OVERFLOW SCUPPERS, RE: A-13

MOCK WALL NOTICE
 BEFORE ANY EXTERIOR MATERIALS ARE PLACED ON A STRUCTURE, A MOCK WALL MUST BE MADE, CONSISTING OF PRIMARY AND ACCENT EXTERIOR MATERIALS AND COLORS, FOR INSPECTION BY THE OWNER. THE PURPOSE OF THIS REQUEST IS TO CONFIRM THE MATERIALS BEING ORDERED FOR THE PROJECT ARE THE SAME AS THOSE APPROVED IN THE ARCHITECTURAL DESIGN REVIEW AND SUBSEQUENTLY THE BUILDING PERMIT REVIEW. OUR INTENTION IS TO ASSIST THE BUILDER IN AVOIDING POSSIBLE UNFORESEEN COSTS OR DELAYS TO THE PROJECT WHILE UNDER CONSTRUCTION.

6 GENERAL NOTES SCALE: NO SCALE
 -ELEV-

5 KEY NOTES SCALE: NO SCALE
 -ELEV-

ENGINEER SEAL & LOGO:

**THE SHOPS @
 SEDONA LAKES
 CENTER**

1875 CR 101
 MANVEL, TEXAS 77578

PROJECT NAME & LOCATION:

ISSUED FOR	DATE
BID	-
PERMIT	06.10.19
CONSTRUCTION	-

REVISIONS	
DATE	DESCRIPTION
01.30.19	REVIEW
02.01.19	REVIEW
02.01.19R2	REVIEW
02.04.19	REVIEW
02.06.19	REVIEW
02.07.19	REVIEW
02.25.19	REVIEW
03.12.19	REVIEW
04.09.19	ARC SUBMITTAL
05.01.19	ARC RE-SUBMITTAL
05.16.19	ARC RE-SUBMITTAL
05.20.19	ARC RE-SUBMITTAL
06.10.19	PERMIT SUBMITTAL

PROJECT NO.
 18-38
 SHEET TITLE
**EXTERIOR
 ELEVATIONS**

SHEET NO.
A-1.2