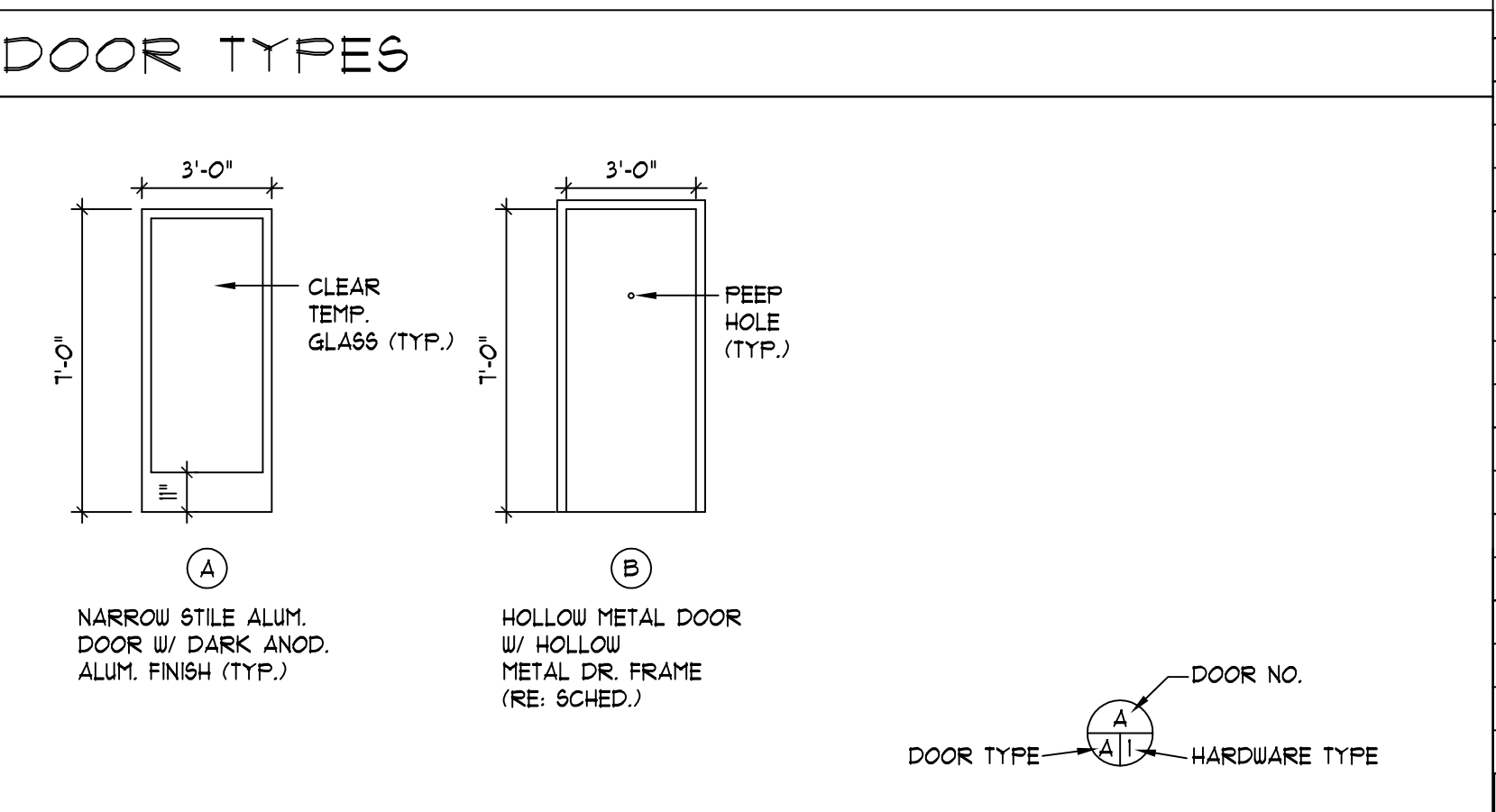


ISSUED FOR	DATE
BID	-
PERMIT	05.20.19
CONSTRUCTION	-

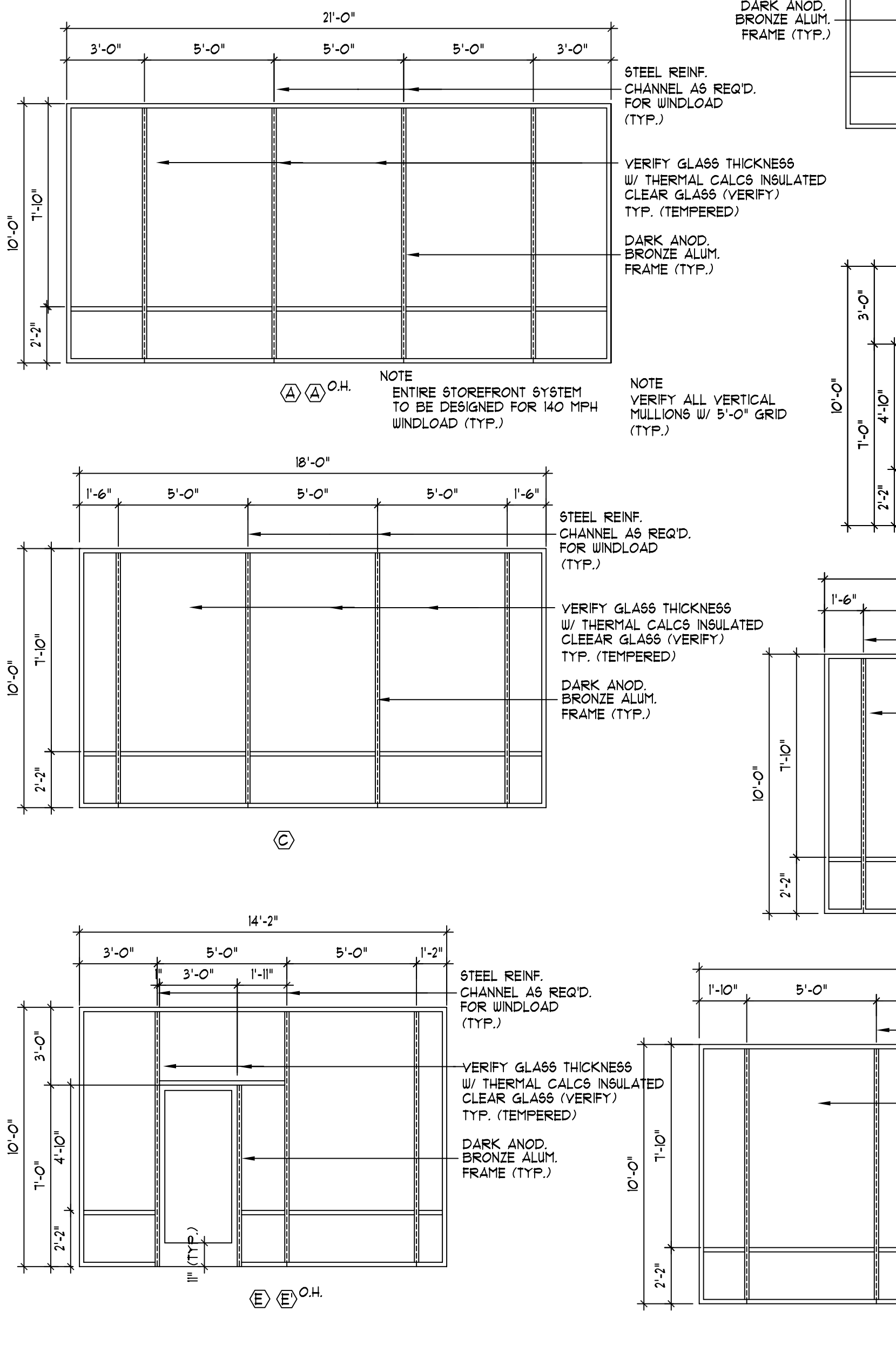
REVISIONS	
DATE	DESCRIPTION
01.30.19	REVIEW
02.01.19	REVIEW
02.01.19R2	REVIEW
02.04.19	REVIEW
02.06.19	REVIEW
02.07.19	REVIEW
02.25.19	REVIEW
03.12.19	REVIEW
04.09.19	ARC SUBMITTAL
05.01.19	ARC RE-SUBMITTAL
05.16.19	ARC RE-SUBMITTAL
05.20.19	ARC RE-SUBMITTAL

ROOM FINISH SCHEDULE							
NO.	ROOM	FLOOR	WALLS	BASE	CLG. HGT.	CEILING	REMARKS
101	WAREHOUSE	EC	-	-	-	EXP.	



### HARDWARE SCHEDULE

HARDWARE SET NO.1	HARDWARE SET NO.2	HARDWARE SET NO.3
1. 1 1/2 PAIR HINGES CYLINDER LOCKSET W/ THUMB TURN PUSH/PULLS PLATE CLOSER WEATHER STRIPPING BOTTOM DOOR SWEEP ALUM. THRESHOLD (1/2" MAX. HGT.) PANIC HARDWARE DOOR STOP	2. 1 1/2 PAIR HINGES CYLINDER LOCKSET LEVER HANDLES PEEP HOLE @ 60" AFF CLOSER WEATHER STRIPPING BOTTOM DOOR SWEEP ALUM. THRESHOLD (1/2" MAX. HGT.) PANIC HARDWARE ALUM. RAIN DRIP DOOR STOP	3. 1 1/2 PAIR HINGES CYLINDER LOCKSET LEVER HANDLES DUAL KEYPAD/ KEYED LOCK ENTRY CLOSER WEATHER STRIPPING BOTTOM DOOR SWEEP ALUM. THRESHOLD (1/2" MAX. HGT.) ALUM. RAIN DRIP DOOR STOP



### DOOR SCHEDULE

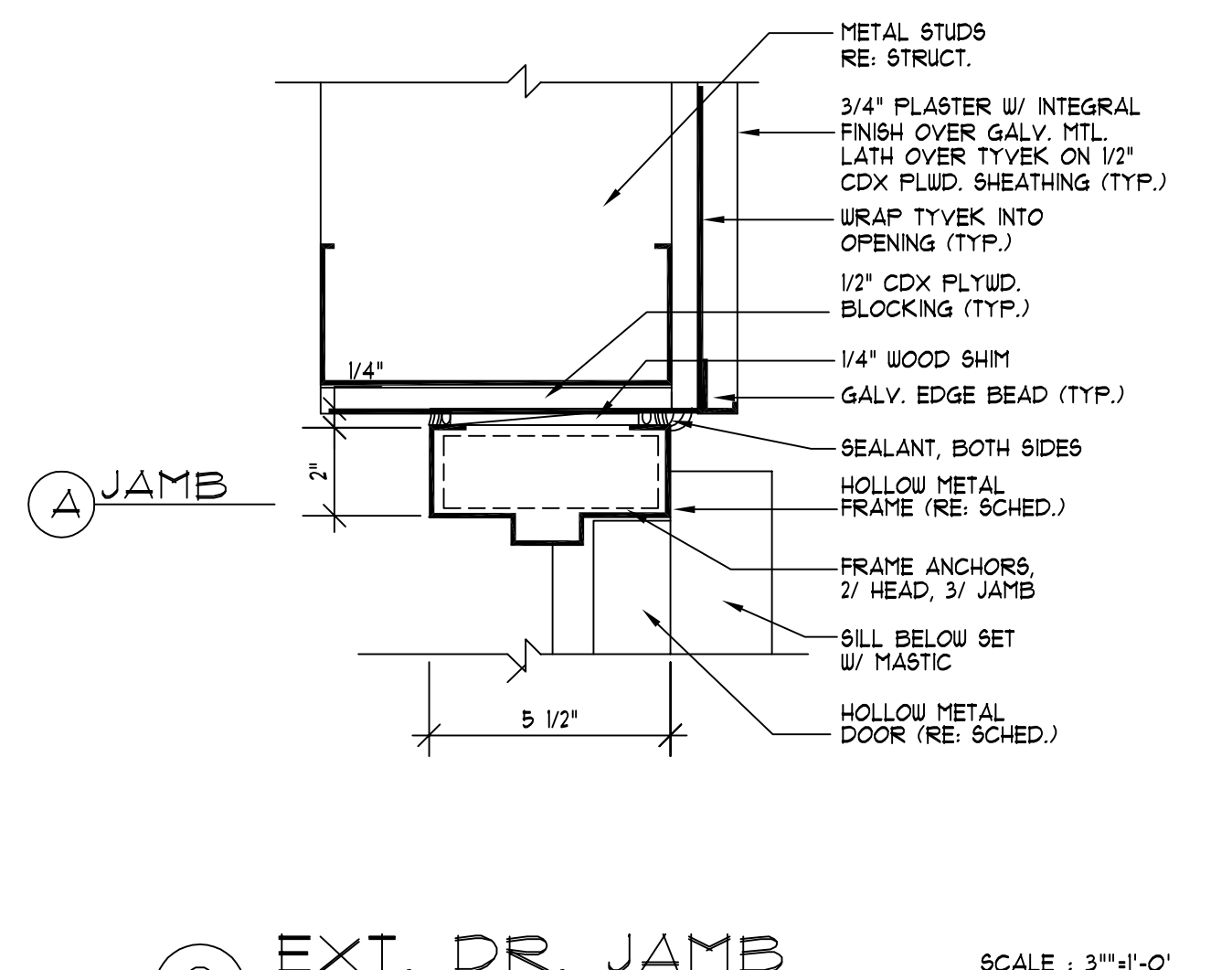
NO.	SIZE	THK	MATERIAL	TYPE	THRESHOLD	HRDW. SET	REMARKS
1	3'-0" X 7'-0"	1 3/4"	ALUM. NARROW STILE	A	ALUM.	1	
2							
3							
4							
5							
6							
7	3'-0" X 7'-0"		HOLLOW METAL DOOR	B		3	RE: DET. 142/A-3.1
8						2	
9							
10							
11							
12							
13							
14							
15							
16							

### LOCK OPERATION DESCRIPTION

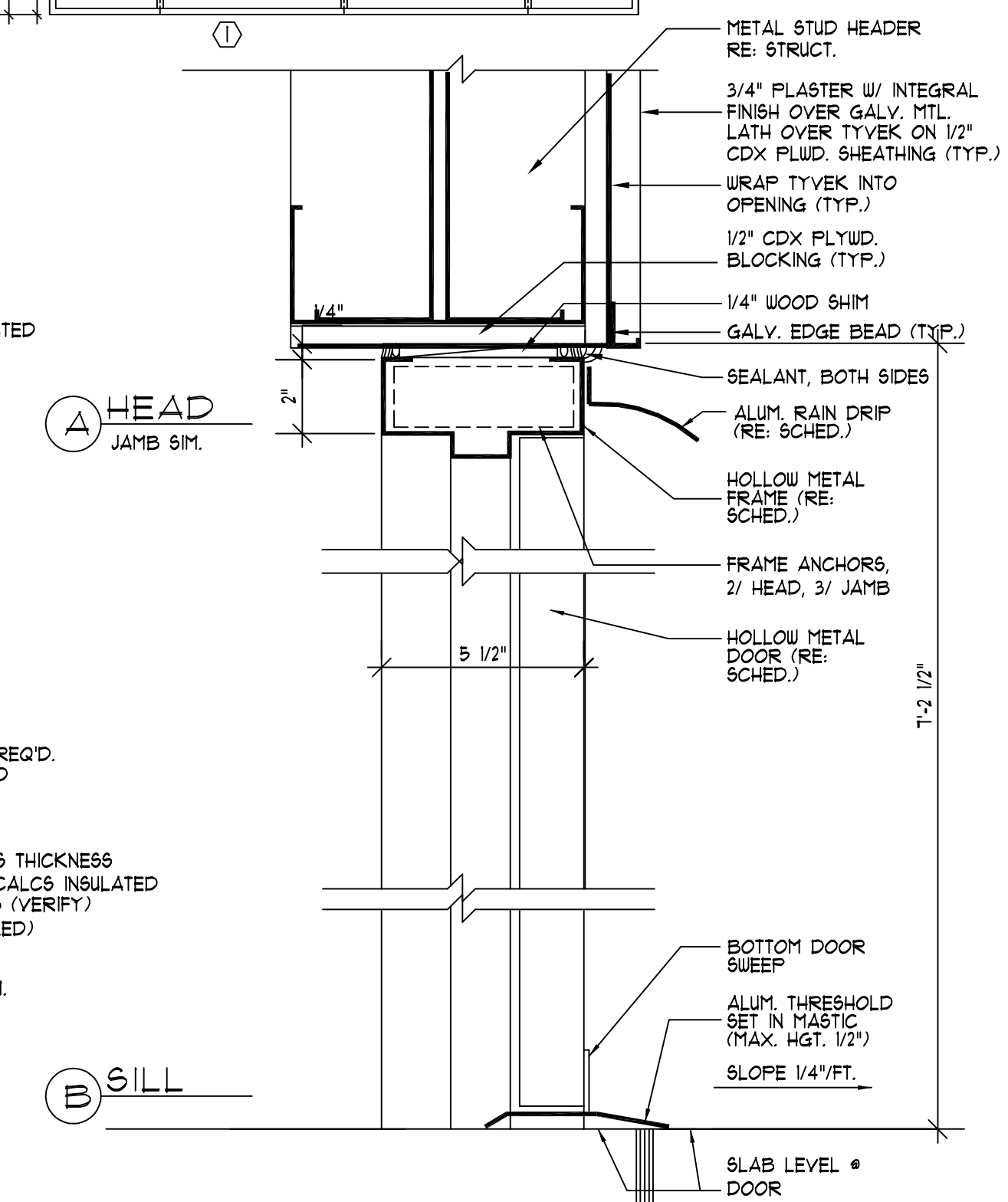
ENTRANCE LOCK TURN/PUSH BUTTON LOCKING. PUSHING AND TURNING BUTTON LOCKS OUTSIDE KNOB REQUIRING USE OF KEY UNTIL BOTTOM IS MANUALLY UNLOCKED. PUSHING BUTTON LOCKS OUTSIDE KNOB UNTIL UNLOCK BY KEY OR BY TURNING INSIDE KNOB.  
PANIC DEVICE: CONTAINS A CYLINDER LOCK FOR A DOOR. RELEASED BY OPERATING PANIC DEVICE FROM INSIDE AND KEY ACCESS FROM OUTSIDE BLDG.  
PRIVACY SET: PUSH BUTTON LOCKING CAN BE OPENED FROM OUTSIDE WITH A SMALL SCREW DRIVER FROM INSIDE, TURNING INSIDE KNOB RELEASES PUSH BUTTON LEVER OPERATED MECHANISMS  
PASSAGE SET: BOTH KNOBS ALWAYS UNLOCKED (LEVER OPERATED MECHANISMS)

### GENERAL NOTES

- ALL PRIMARY ENTRANCES TO THE BUILDING AND FACILITIES SHALL BE MADE ACCESSIBLE TO THE DISABLED.
- EXIT DOORS SHALL BE ABLE TO OPEN FROM THE INSIDE WITHOUT THE USE OF A KEY OR SPECIAL KNOWLEDGE. HAND ACTIVATED DOOR OPENING HARDWARE SHALL BE CENTERED BETWEEN 30" AND 40" ABOVE THE FLOOR. LATCHING AND LOCKING DEVICES THAT ARE HAND ACTIVATED AND WHICH ARE IN A PATH OR OF TRAVEL SHALL BE OPERABLE WITH A SINGLE EFFORT BY LEVER-TYPE HARDWARE, PANIC BARS, PUSH-PULL ACTIVATING BARS, TO OTHER HARDWARE DESIGNED TO PROVIDE PASSAGE WITHOUT REQUIRING THE ABILITY TO GRASP THE OPENING HARDWARE. LOCKED EXIT DOORS SHALL OPERATE AS ABOVE IN EGRESS DIRECTION.
- EVERY REQUIRED EXIT DOORWAY SHALL BE OF A SIZE AS TO PERMIT THE INSTALLATION OF A DOOR NOT LESS THAN 3 FEET IN WIDTH AND NOT LESS THAN 6'-8" IN HEIGHT, WHEN INSTALLED IN EXIT DOORWAYS. EXIT DOOR SHALL BE CAPABLE OF OPENING AT LEAST 90 DEGREES AND SHOULD BE SO MOUNTED THAT THE CLEAR WIDTH OF THE EXIT WAY IS NOT LESS THAN 32".
- FROM HINGED DOORS, THE OPENING WIDTH SHALL BE MEASURED WITH THE DOOR POSITIONED AT AN ANGLE OF 90 DEGREES FROM ITS CLOSED POSITION. AT LEAST ONE OR A PAIR OF DOORS SHALL MEET THIS OPENING WIDTH REQUIREMENT.
- THRESHOLDS SHALL NOT EXCEED 1/2" IN HEIGHT.
- THE FLOOR OR LANDING ON EACH SIDE OF AN EXIT DOOR SHALL BE LEVEL. THE LEVEL AREA LENGTH IN THE DIRECTION OF THE DOOR SWING OF AT LEAST 60" AND A LENGTH OPPOSITE THE DIRECTION OF THE DOOR SWING OF 44" AS MEASURED AT RIGHT ANGLES TO THE PLANE OF THE DOOR IN ITS CLOSED POSITION.
- THE WIDTH OF THE LEVEL AREA ON THE SIDE TO WHICH THE DOOR SWINGS SHALL EXTEND 24" PAST THE STRIKE EDGE OF EXTERIOR DOORS AND 18" PAST THE STRIKE EDGE FOR INTERIOR DOORS.
- THE SPACE BETWEEN TWO CONSECUTIVE DOOR OPENINGS IN A VESTIBULE, SERVING OTHER THAN A REQUIRED STAIRWAY, SHALL PROVIDE A MINIMUM OF 48" OR CLEAR SPACE FROM ANY DOOR OPENING INTO SUCH VESTIBULE WHEN THE DOOR IS POSITIONED AT AN ANGLE OF 90 DEGREES FROM ITS CLOSED POSITION. DOORS IN A SERIES SHALL SWING EITHER IN THE SAME DIRECTION OR AWAY FROM THE SPACE BETWEEN THE DOORS.
- MAXIMUM EFFORT TO OPERATE DOORS SHALL NOT EXCEED 85 LBS. FOR EXTERIOR DOORS AND 5 LBS. FOR INTERIOR DOORS. SUCH PULL OR PUSH EFFORT BEING APPLIED AT RIGHT ANGLES TO HINGED DOORS AND AT THE CENTER PLANE OF SLIDING OR FOLDING DOORS. COMPENSATING DEVICES OR AUTOMATIC DOOR OPERATORS MAY BE UTILIZED TO MEET THE ABOVE STANDARDS. WHEN FIRE DOORS ARE REQUIRED, THE MAXIMUM EFFORT TO OPERATE THE DOOR MAY BE INCREASED NOT TO EXCEED 15 LBS.
- EXIT DOORS SHALL HAVE A SIGN THAT IS READILY VISIBLE WITH 1" LETTERS READING, "THIS DOOR TO REMAIN UNLOCKED DURING BUSINESS HOURS."
- ONE QUARTER INCH THICK IDENTIFICATION SYMBOLS SHALL BE PROVIDED AT DOORS TO SANITARY FACILITIES. A 12" TRIANGLE FOR MEN AND A 12" DIAMETER CIRCLE FOR WOMEN, CENTERED AT A HEIGHT OF 60" A.F.F. ID REQUIRED.
- CONTROLS, OPERATING MECHANISMS AND HARDWARE. CONTROLS OPERATING MECHANISMS AND HARDWARE INCLUDING SWITCHES THAT CONTROL LIGHTING AND VENTILATION AND ELECTRICAL CONVENIENCE OUTLETS, IN ACCESSIBLE SPACES, ALONG ACCESSIBLE ROUTES, OR AS PARTS OF ACCESSIBLE ELEMENTS SHALL COMPLY WITH SECTION 3106 (C) EXCEPTION: FLOORS OR PORTIONS OF FLOORS NOT CUSTOMARILY OCCUPIED, INCLUDING BUT NOT LIMITED TO, ELEVATOR PITS, OBSERVATION GALLERIES USED PRIMARILY FOR SECURITY PURPOSES, ELEVATOR PENTHOUSES, MONO-OCCUPIED SPACES ACCESSED ONLY BY LADDER CATWALKS, CRAWL SPACES, VERY NARROW PASSAGEWAYS OR FREIGHT ELEVATORS OR PIPING (C) CONTROL HARDWARE 1. OPERATION HANDLES, PULL LATCHES, LOCKS AND OTHER OPERATING DEVICES ON DOORS, WINDOWS, CABINETS, PLUMBING FIXTURES AND STORAGE FACILITIES, SHALL HAVE LEVER OR OTHER SHAPE WHICH WILL PERMIT OPERATION. DOORS SHALL COMPLY WITH SECTION 3104.
- MOUNTING HEIGHTS, THE HIGHEST OPERABLE PART OF ENVIRONMENTAL AND OTHER CONTROLS, DISPENSORS, RECEPTACLES AND OTHER OPERABLE EQUIPMENT SHALL BE WITHIN AT LEAST ONE OF THE REACH RANGES SPECIFIED IN SECTION 3106 (B) AND NOT LESS THAN 36 INCHES ABOVE THE FLOOR. ELECTRICAL AND COMMUNICATIONS SYSTEM FLOOR DOOR HARDWARE SHALL BE MOUNTED NOT MORE THAN 42 INCHES ABOVE FINISHED FLOOR.
- CLEAR FLOOR SPACES. CLEAR FLOOR SPACES THAT ALLOW A FORWARD OR SIDE APPROACH SHALL BE PROVIDED AT ALL CONTROLS OR HARDWARE.



2 EXT. DR. JAMB



1 EXT. DR. SECTION