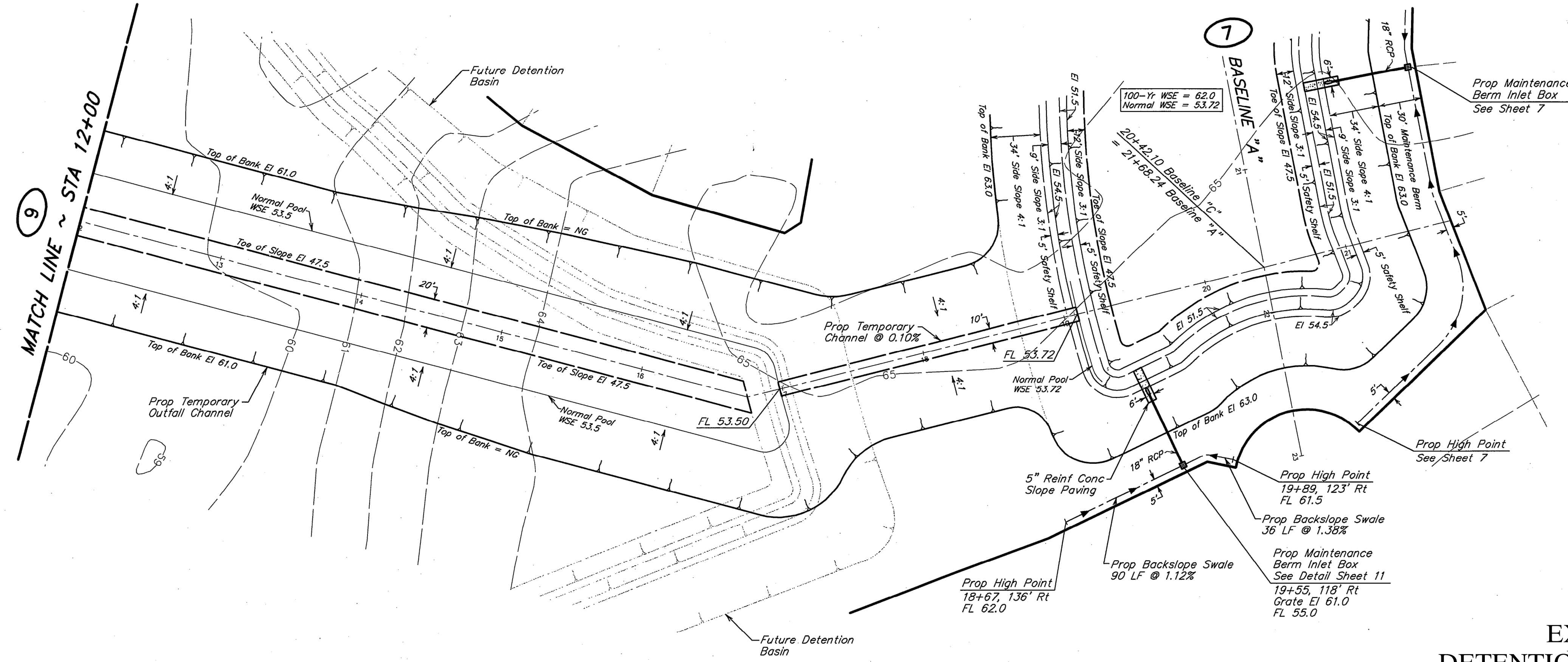
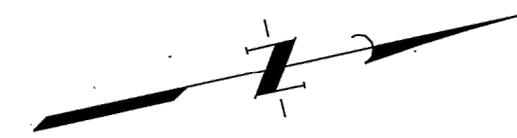


REFERENCE ONLY



BENCH MARK
Elevations shown hereon are based on USGS Monument, Designation M 456 located on a brass disk in a concrete post near the intersection of the East right of way of the G.C.&S.F.R.R. and the North right of way of Halik Road.
Elevation 47.77 (1979 Adjustment)

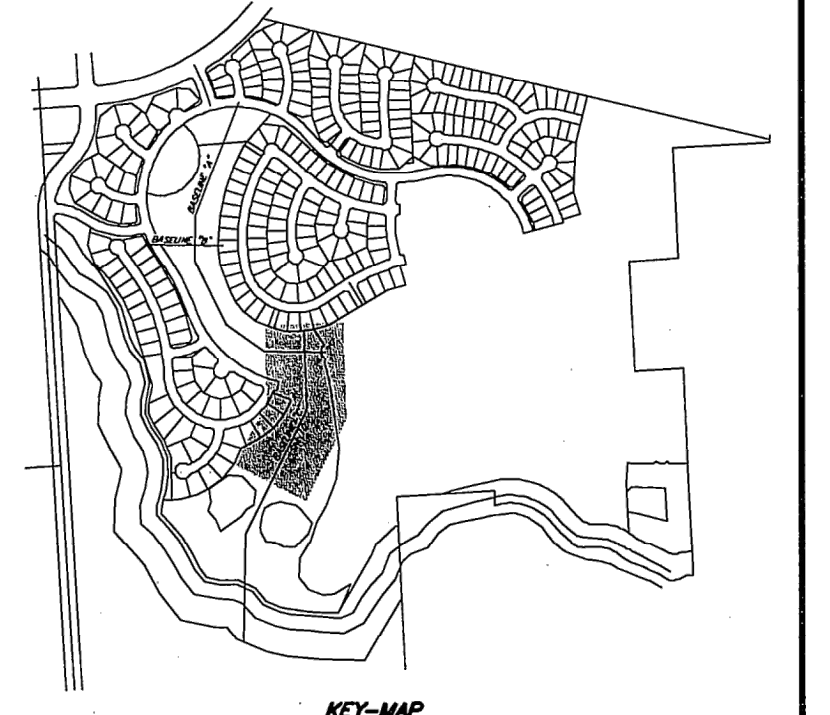
T.B.M. A
A square cut on the back of curb on the East side of Highway 288, just North of American Canal.
Elevation 70.94 (NAVD 1979 Adjustment)

T.B.M. B
A square cut on the back of curb on the East side of Highway 288, just North of Mustang Bayou.
Elevation 65.30 (NAVD 1979 Adjustment)

100-YEAR WATER SURFACE ELEVATION
ACCORDING TO THE FEDERAL EMERGENCY MANAGEMENT (FEMA) FLOOD INSURANCE RATE MAP (FIRM) FOR THE BRAZORIA COUNTY, TEXAS AND INCORPORATED AREAS, COMMUNITY PANEL No. 48039C0020 II, EFFECTIVE DATE JUNE 5, 1989, THE SUBJECT TRACT LIES PARTIALLY WITHIN ZONE "AE" (AREA DETERMINED TO BE SPECIAL FLOOD HAZARD AREAS INUNDED BY 100-YEAR FLOOD WITH BASE FLOOD ELEVATION DETERMINED). THE SUBJECT TRACT WILL BE FILLED ABOVE THE 100-YEAR FLOOD ELEVATION. A CLOWM HAS BEEN PREPARED FOR THIS TRACT. A LOWR WILL BE PREPARED FOR THIS DEVELOPMENT UPON COMPLETION OF CONSTRUCTION.

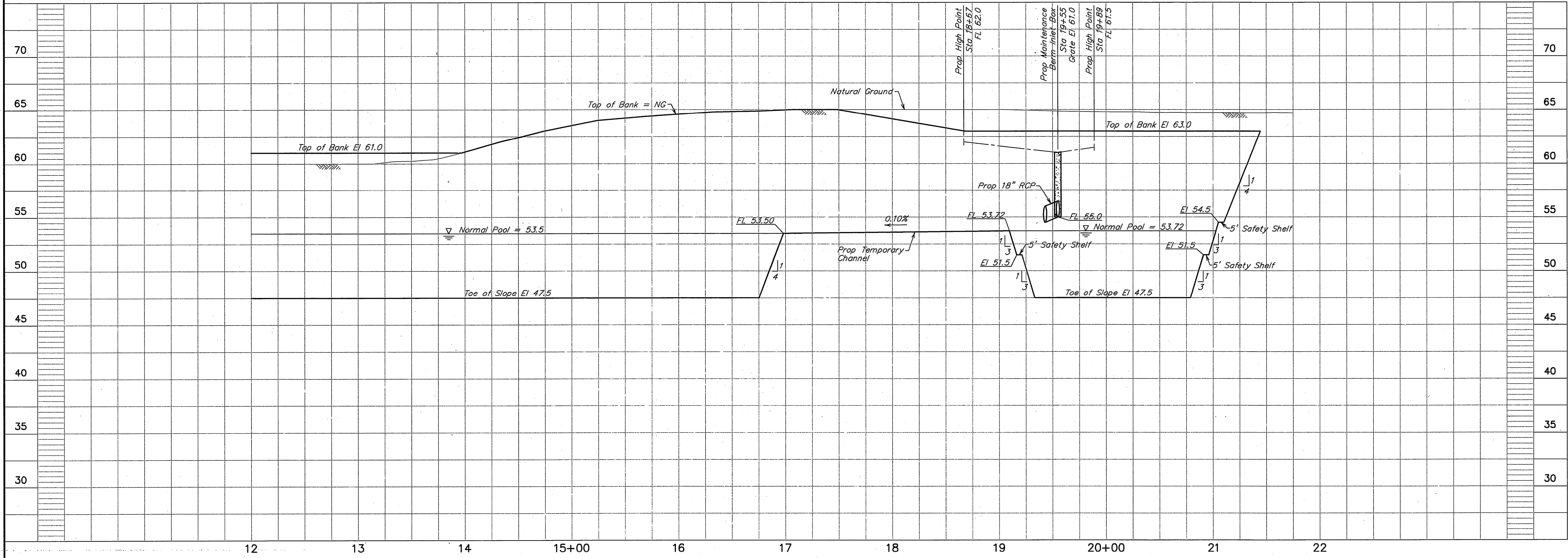
PRIVATE UTILITY LINES SHOWN
AT LEAST 48 HOURS BEFORE EXCAVATING IN STREET R.O.W. OR EASEMENTS CALL THE LOWR STAR NOTIFICATION 713-223-4567.

CenterPoint Energy/Electric Facilities (Approved only for crossing underground ductlines, unless otherwise noted.) Valid at time of review only.	Date:
SBC Approved for underground conduit facilities only. Signature valid for one year.	Date:
CenterPoint Energy/Gas Facilities (Gas service lines are not shown)	Date:



EXISTING
DETENTION POND DESIGN
C3.6

BASELINE "C"



NO.	DATE	REVISIONS	APP.
1	2/11/08	ADDED FLOODPLAIN NOTE.	SCS

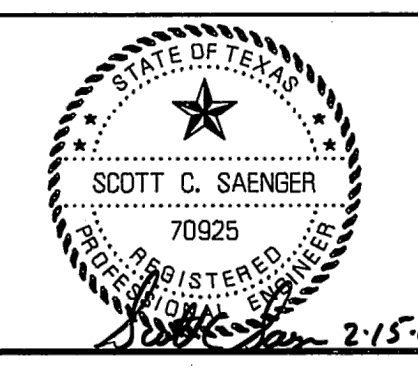
SEDONA LAKES M.U.D.
BRAZORIA COUNTY, TEXAS

SEDONA LAKES PHASE I DETENTION

BASELINE "C"
12+00 TO 22+00

JC JONES & CARTER, INC.
ENGINEERS • PLANNERS • SURVEYORS
6335 Guffon Dr., Suite 100 Houston, Texas 77081 (713) 777-5337

SCALE: 1"=50' H., 1"=5' V. DGN. BY: DMB
DATE: FEBRUARY 11, 2008 DWN. BY: MDS
JOB NO. S370-008 DWG. NO. ---
SUBMITTED: --- SURV. BY: ---
F.B. NO. ---



SHEET NO.
10
OF 13