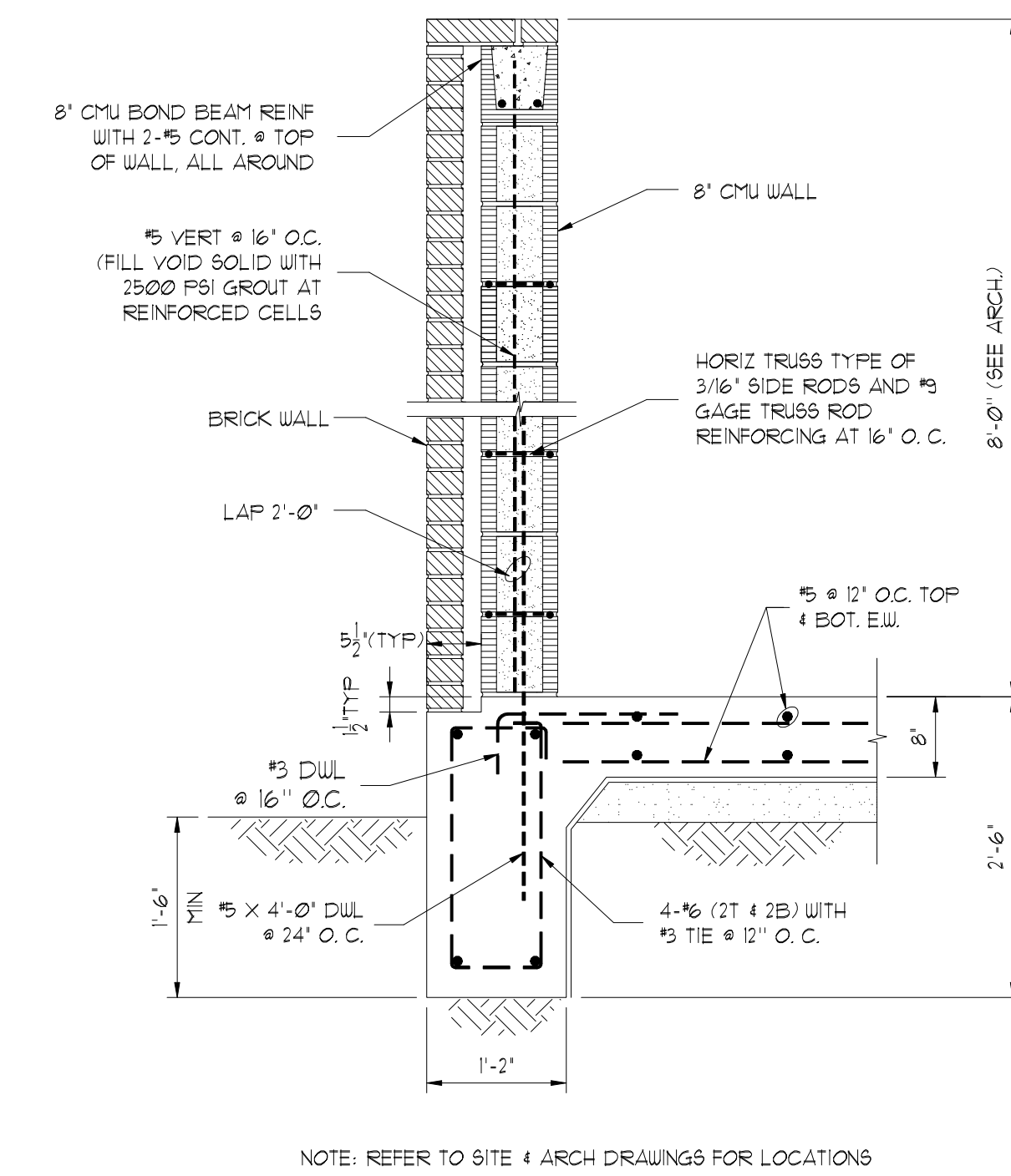
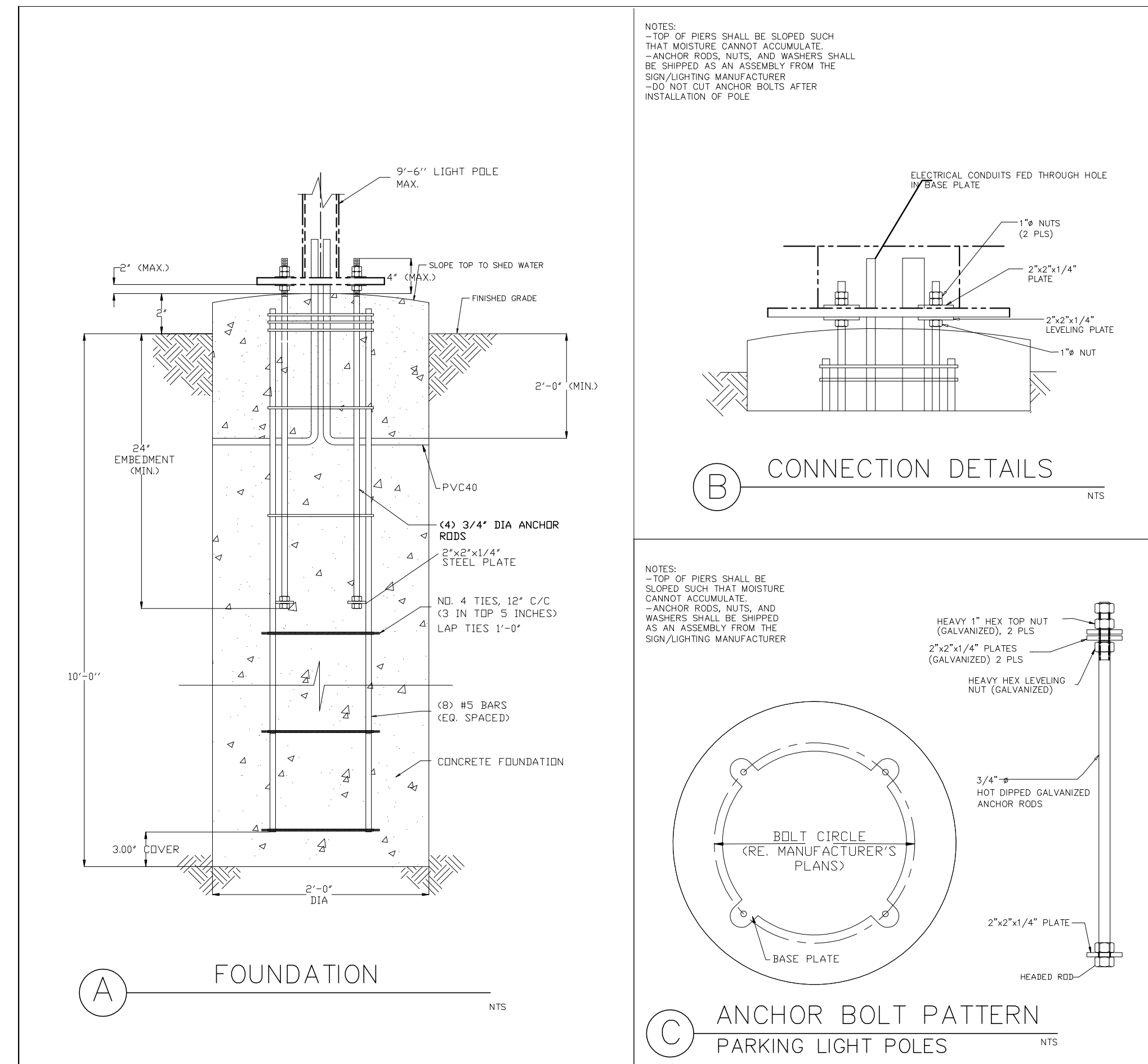


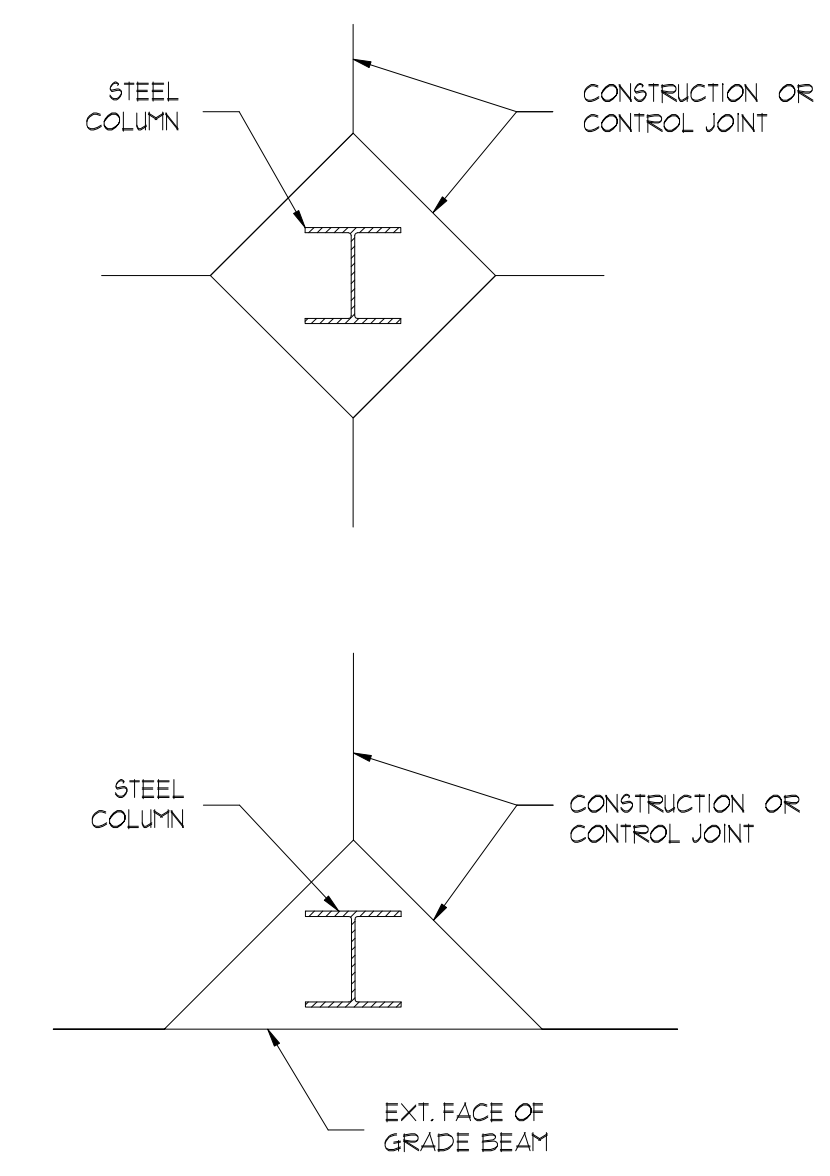
1 DUMPSTER FOUNDATION PLAN
S2.1 NOT TO SCALE



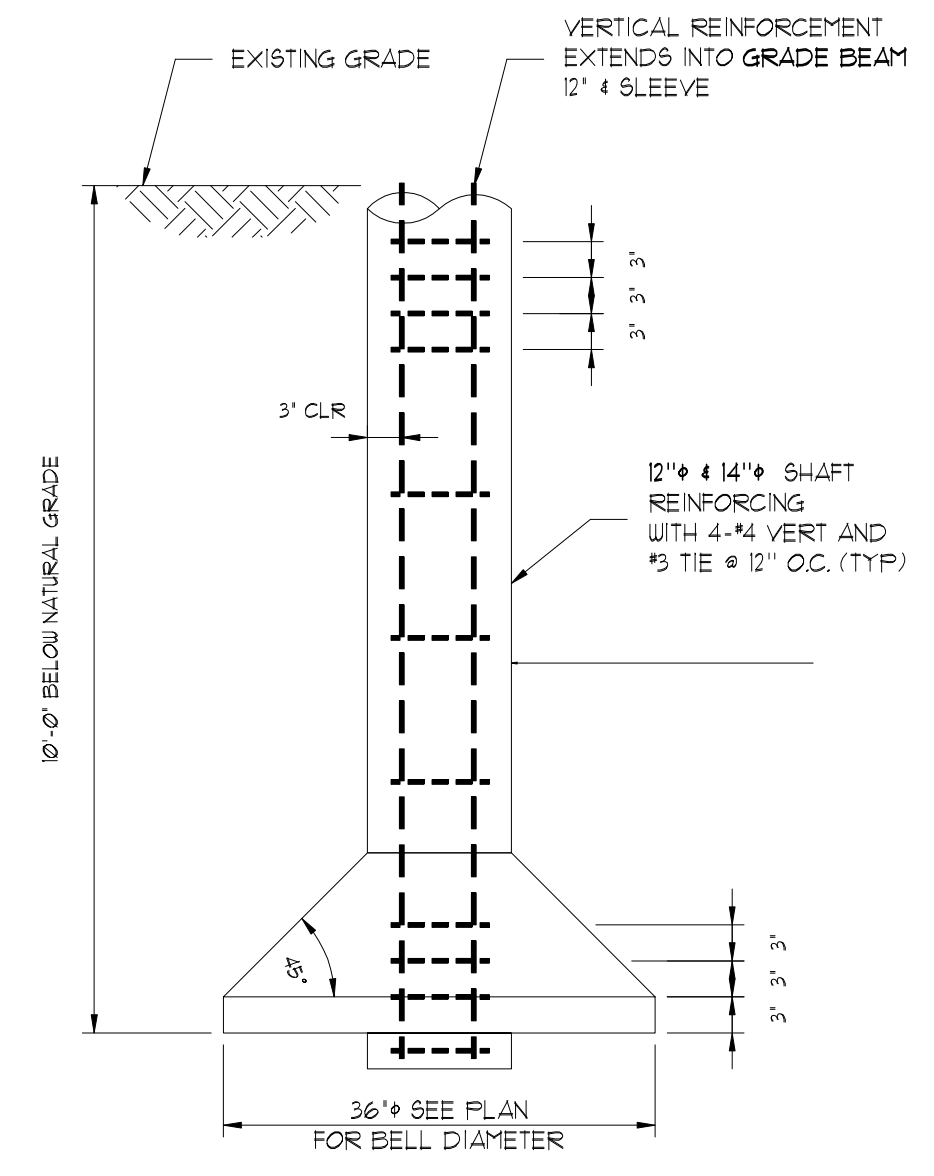
2 DUMPSTER DETAIL
S2.1 NOT TO SCALE



3 25' LIGHT POLE DETAIL
S2.1 NOT TO SCALE



4 SLAB BLOCK-OUT AT COLUMN
S2.1 NOT TO SCALE



5 TYP. PIERS DETAIL
S2.1 NOT TO SCALE

I:\2019\1467 - NewQuest Properties\0001 - The Shops At Sedona Lakes - CR 101 & CR 94\Structural\Drawings\REV 1 - 08-07-19\19-1467-0001 - The Shops Sedona - Struc - Rev 1 - 08-07-19

THIS DRAWING IS THE PROPERTY OF BEC ENGINEERS AND CONSULTANTS, LLC. REG. # F-18680 AND MAY NOT BE REPRODUCED OR USED WITHOUT WRITTEN PERMISSION. ANY UNAUTHORIZED ALTERATION WILL VOID ANY AND ALL RESPONSIBILITY BY BEC, ITS EMPLOYEES AND REPRESENTATIVES.

BE ENGINEERS AND CONSULTANTS, LLC
3200 BEC ENGINEERS AND CONSULTANTS, LLC 77042
PH: 832-240-9771 FAX: 832-240-2724
TELE REGIS. #: F-18680

NO	DATE	ISSUES/REVISIONS
0	06/07/2019	ISSUED FOR PERMIT
1	08/07/2019	REVISED PER CITY COMMENTS

NEWQUEST PROPERTIES
JOSEPH M.FOSTER & ASSOCIATES
THE SHOPS AT SEDONA LAKES
MANVEL, TEXAS

FOUNDATION DETAILS
SHEET NO. S2.1

