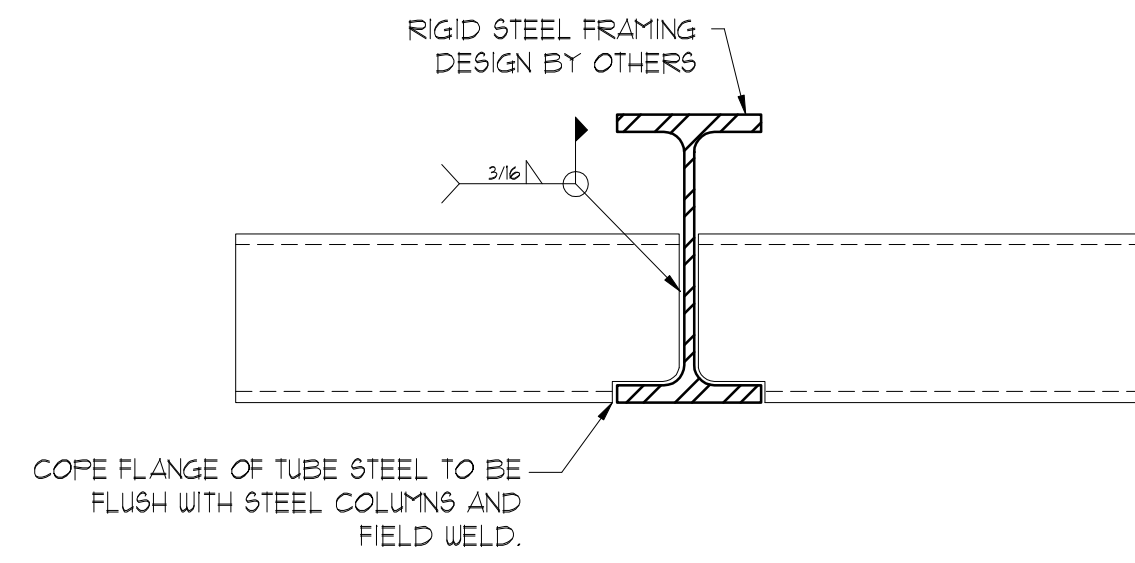
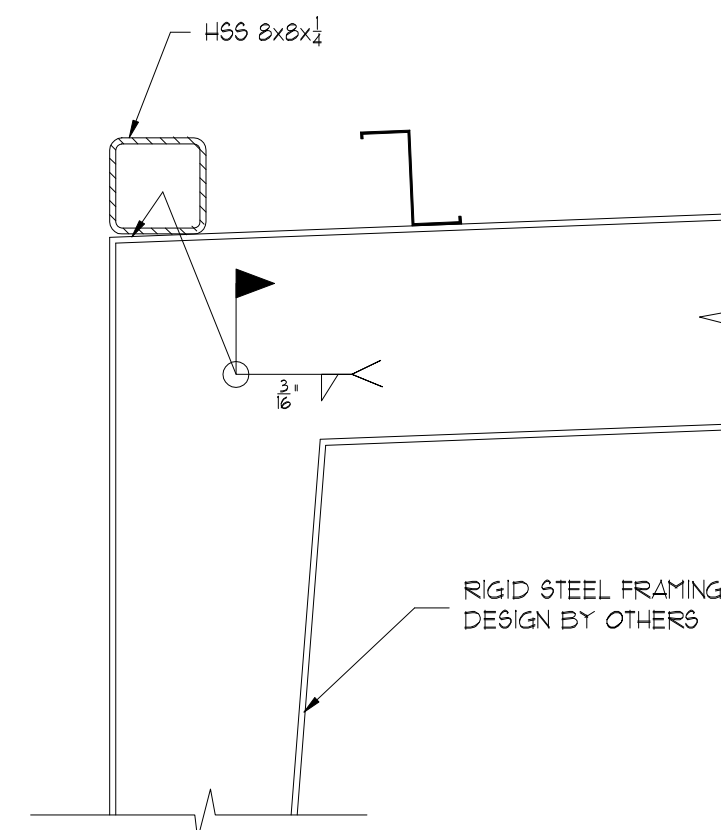


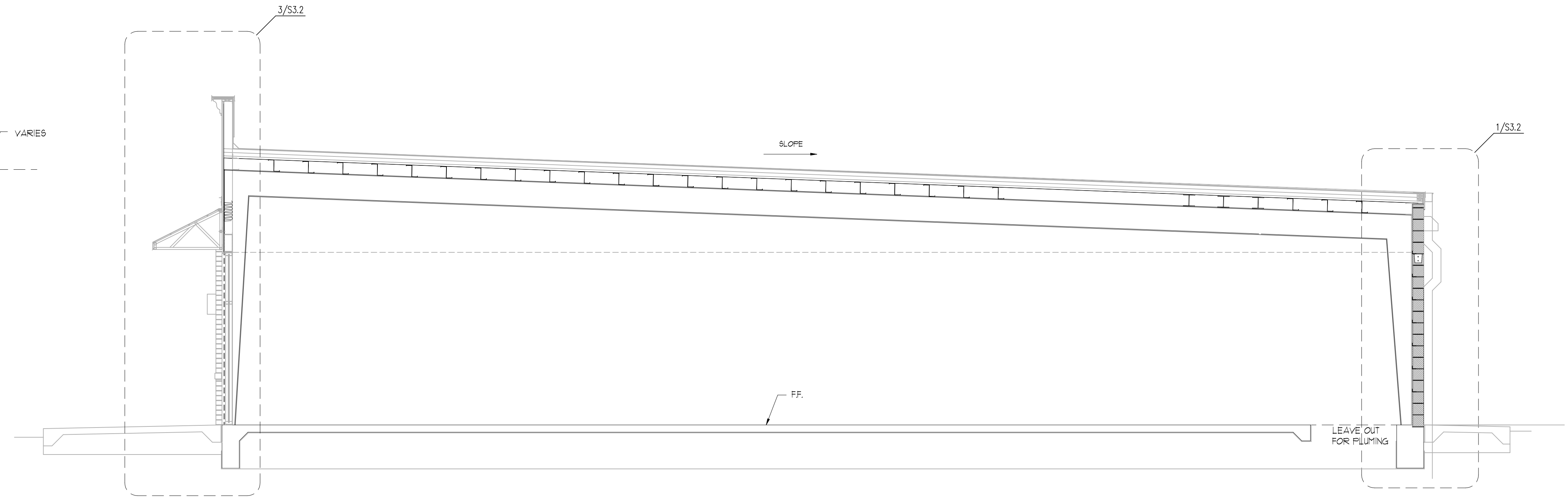
1 SECTION
S3.1 NOT TO SCALE



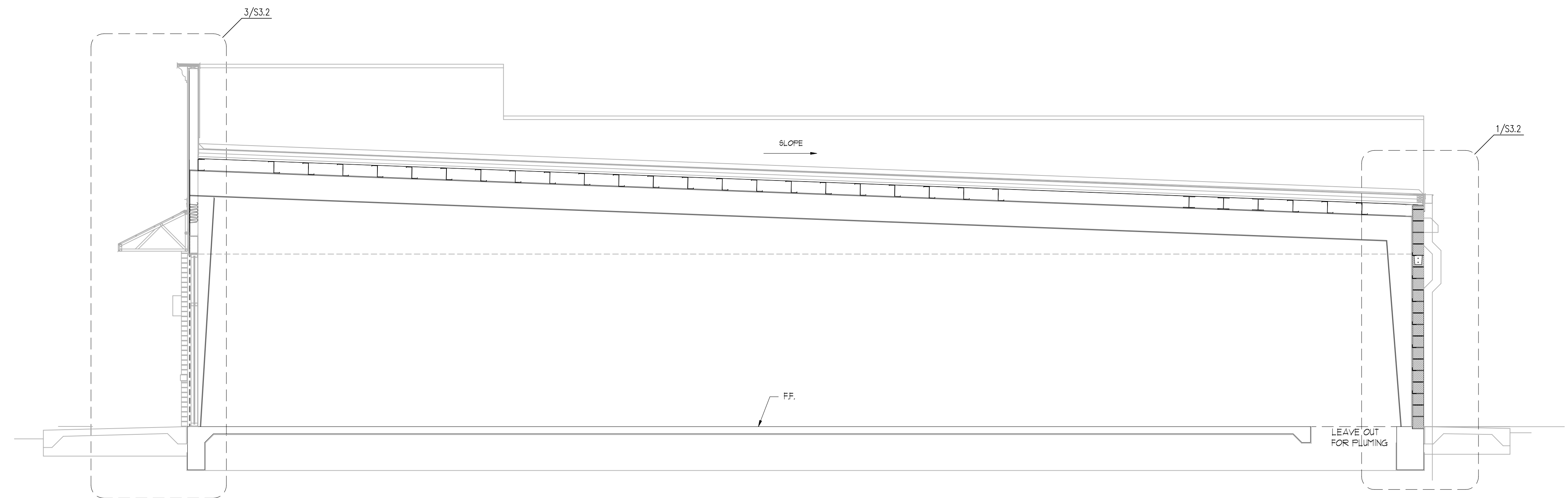
2 SECTION
S3.1 NOT TO SCALE



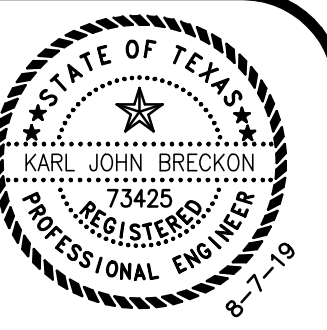
3 SECTION
S3.1 NOT TO SCALE



3 SECTION
S3.1 NOT TO SCALE



4 SECTION
S3.1 NOT TO SCALE



NO	DATE	ISSUES/REVISIONS
0	06/07/2019	ISSUED FOR PERMIT
1	08/07/2019	REVISED PER CITY COMMENTS

BEC ENGINEERS AND CONSULTANTS, LLC
 3200 W. BECKLEY AVENUE, SUITE 100, MANVEL, TEXAS 77042
 PH: 832-240-9771 | FAX: 832-240-2724
 TEXAS REG. NO. F-18680

NEWQUEST PROPERTIES
JOSEPH M.FOSTER & ASSOCIATES
THE SHOPS AT SEDONA LAKES
MANVEL, TEXAS

REF #:	19-1467-0001
DRN:	YAN
CHK:	K.B.
DES:	K.B.

FRAMING
DETAILS

SHEET NO.
S3.1

THIS DRAWING IS THE PROPERTY OF BEC ENGINEERS AND CONSULTANTS, LLC. REG # F-18680 AND MAY NOT BE REPRODUCED OR USED WITHOUT WRITTEN PERMISSION. ANY UNAUTHORIZED ALTERATION WILL VOID ANY AND ALL RESPONSIBILITY BY BEC, ITS EMPLOYEES AND REPRESENTATIVES.